
THE TEXT BOOK OF CLOSE COMBAT

Originally Compiled by T. Law

Ripped off and Re-Distributed By Mr. Mooke

General Warfare Tactics. For Public Information and Research Only.

Public Domain Information.

Below is the usual warning crap. Allow me to summarize:

The info contained here can be dangerous if you're an idiot but we aren't your mummies so it's not our fault if you are naughty.

Mr. Mooke says religion is for the simple minded and/or ignorant

Please visit Atheistalliance.org for the best Atheist resources on the web.

This page is a collection of illustrated training notes and articles on practical hand to hand combat. Critical comment and contributions are welcome on techniques, tactics, theories and principles. Areas of interest: Offensive Combat, Defensive Combat and finally, Control and Restraint. All copyrighted material on this site is reproduced with each individual authors permission

WARNING!!

You must be over the age of 18 to view the Hand To Hand Combatives which are discussed and illustrated on this site. The author of this site has reviewed effective fighting systems for over 35 years and is still revising his operational techniques in the light of personal fighting experience. The techniques presented on this web site are for public information and research purposes only. This web site is presented, subject to the following condition:

- The author will not be held responsible for either the physiological, psychological or material results of the application of any of the techniques either described or illustrated.

The techniques described and illustrated on this web site have evolved from both battle field and street fighting experience. Close combat, and also the training for close combat, is extremely brutalizing. Both sources can cause severe psychological and physiological damage, not only to the receiver but also to the operator. The application of close combat techniques off the battle field can be judged as criminal. This web site is intended for academic study and discussion only.

THE TEXT BOOK OF CLOSE COMBAT

CHAPTER's 1 and 2

First Steps in Offensive and Defensive Close Combat

General Warfare Tactics. For Public Information and Research Only.

Public Domain Information.

INTRODUCTION

The purpose of this text book is to present the reader with both offensive and defensive examples of close combat.

A very wide spectrum of techniques and tactics will be described in this text book. The original purpose of this approach was to allow the reader to select techniques that suit them personally and also meet their operational requirements.

The techniques described and illustrated in this text book have been used in general warfare by Western states from the early 1900's onwards. These armies have always used close combat training programmes for two main reasons;

- First, close combat training promotes fighting spirit and ruthless efficiency.
- Second, close combat training programmes are the solid foundations for self confidence on the battle field.

Definitions

Self Defence. The amount of physical force used in self defence must be the minimum necessary to protect either you or others. This degree of force should allow you to either escape, ward off or neutralize an attack.

Close Combat. To fight and oppose with little regard paid to minimum force requirements. The amount of force used will depend on the operational aims. This may include neutralizing, disabling, capturing and killing the enemy.

First Steps

Whenever possible, text book and video studies must be complemented with "hands on training" from a competent instructor. First hand accounts from combat veterans will also give more credence to the training programme.

Standing Combat

Join a boxing, karate or kung fu club and gain valuable contact experience. This must include the practice of timing hits, judging distance, feinting, counter attacking and closing in for grappling techniques. Do not spend too long learning the one style. Focusing on the one style will create a mind set for that particular style. For example, focusing on boxing may cause you to miss the chance to either kick or throw your opponent when that opportunity arises.

Grappling

Join a club that specializes in either judo, jujitsu, sombo or wrestling. Here you will learn the fundamentals of balance, break falling, strangling, choking, limb locking, the mount, the guard and escapes. A good substitute for sound practical hands on instruction in these areas does not exist.

When you are fighting more than one opponent, grappling must be avoided. You will limit your chances of survival if you allow yourself to be tied up by either applying or being caught in body holds or arm lock.

A competent ground fighter can be defeated by any of the following quick and lethal tactics; gripping the ear and chopping it off with the free hand, poking out eyes, chopping the front of the throat or eyes, biting off ears, noses and cheeks.

Technical proficiency in either boxing or wrestling or any sport combat is not a requirement for battle field combat. Half a brick or the edge of an entrenching tool to the nape of the neck will work much faster than many years of karate training. The application of these tactics requires nothing more than the will to survive.

Safety Rules

Close combat training will, at some stage, incur physical injury. This is a fact of life in all areas of combat training. Prior to any combat training, commanders are obliged to predict the expected loss rate from training accidents. This will ensure that the programme starts with sufficient personnel to offset the training losses. Safety rules will help to reduce the accident rate in your training programme.

1. Basic training dress must include rubber soled boots, combat jacket and trousers and finally, protective body guards. Always use commercial protective equipment that meets your training requirements.
2. Prior to any training session, a thorough safety check must be made of all dress and equipment. Always check the soles of all footwear and all clothing to ensure that there are no illegal or foreign bodies attached. Also check that all pockets are empty and no one is wearing jewelry or badges.
3. When sparring, restrict all hand and foot attacks to well padded secondary pressure points. This procedure will help to reduce training injuries and teach individuals to focus and control their attacks.
4. Establish prearranged signals for stopping all activity on the training floor. The signals can be either verbal or non verbal. The most common signals in general use are either two taps on the training partner or the floor or the shout "Stop!"
5. Before practising any technique, always ensure that those involved have a clear understanding of their roles.
6. Practise all new techniques slowly until those involved can control that technique. Speed follows on from a mastery of accuracy and control.
7. Never allow new training partners to either train or spar in your group. Give all new partners a probation period that allows them to master the safety rules and basic techniques.

8. Competence in basic first aid is a necessary skill for all those taking part in close combat training. Transport must also be available to take injured personnel to the nearest hospital.
9. No one is allowed to leave the training area without the permission of the instructor.
10. Any additions to these safety rules may be dependent on the operational requirements.

Balance

All forms of combat have one common denominator, that is, balance. You must strive to maintain your own equilibrium and try to unbalance your opponent, both mentally as well as physically. This will make all your techniques much stronger and the opponents much weaker. The simple act of stepping out of line from their line of attack will unbalance the opponent. If the opponent has grabbed at your upper body, step back and out to the side to pull them off balance into a defensive mode. If the opponent grabs at your wrist, the act of palm heeling their opposite shoulder will force them to over reach. This can lead you to using a throwing technique.

Ground Fighting

Training programmes should be structured so that equal amounts of time are devoted to both standing and ground combat. There are three main reasons for this.

First, either you or your opponent may be punched, clubbed, swept or thrown to the ground.

Second, in some situations it may be more prudent to go down and attack the opponent's legs, knees, groin, testicles or bladder.

Third, there is always the chance that both you and your opponent will go to the ground together.

If your experience in ground fighting is limited, then your survival will also be limited. The grounded opponent is not necessarily overpowered or passive. This

position can be used to launch many different forms of crippling and lethal attacks that are banned in sport combat.

When you are fighting more than one person, your survival will be limited. Should you end up in the grounded position, your survival is extremely limited. Offensive and defensive use of the group will be discussed in other chapters.

Lethal Techniques

Sport combat systems have excellent safety rules and safe contact techniques. Some of the techniques used in sport combat can form the basis of your close combat repertoire.

Despite these facts, rigid adherence to the safety rules will produce combatants with limited practical abilities. This is because the simplest and most lethal techniques in close combat remain unexplored and unrehearsed.

The only way lethal techniques can be incorporated into your training programme is to either use slow motion drills or direct the lethal strikes to well protected areas. Also, non-lethal pressure point attacks can be directed to various parts of the body. These pressure point attacks can be used for both self defence and for setting up lethal attacks. Strangle and choke holds, as well as limb locks can be applied to the submission stage. This procedure will give you a safe and much more realistic approach to practical close combat.

Fighting Distances

In this text book on close combat, three ranges to be considered.

- Long range offensive and defensive styles are usually favored by the taller opponent. (See chapter 2)
- Close range offensive and defensive styles are usually favored by the shorter opponent or wrestler. (See chapter 2 for a more detailed discussion.)
- Ground fighting is favored by the wrestler. It is also the last option open to the downed opponent. (See chapter 13 for a more detailed discussion.)

Dress

In a combat situation, you will be dressed and carrying equipment essential to the operational task.

Unless you have trained in this equipment, you may not be prepared to deal with

this situation.

After you have mastered a set of techniques in basic training dress, you must rehearse in full operational dress. This procedure will allow you to appreciate the limitations and restrictions that operational dress and equipment can impose upon specific techniques.

Consideration should also be given to the operational dress worn by the enemy.

Fear Control

Before any boxing match, boxers will experience the physical effects of their mental turmoil. The fear of physical pain, humiliation, or losing the fight can induce many physical side effects.

For example, bowel movements will increase in frequency. There can also be incidences of vomiting or trembling.

A detailed discussion on the physiological and psychological effects of battle field fear and its effects would require a chapter on its own. This knowledge would not enhance your ability to cope with the disruptive effects that fear can create.

Fear is much easier to deal with when it is accepted as mental and physical distress. This distress is created by thinking about the impending combat and all the perceived dangers. Mental and physical distress then creates a nervous energy that is very difficult to control. Paradoxically, this nervous energy is also an essential aid to individual survival. The total control of fear is neither necessary, nor desirable. The nervous energies created by fear will tense up the whole body and prepare it for either the fight or the escape. When the human body is slightly tense, it can respond much faster than a relaxed body.

Physical tension also prepares the body for the impact of the opponent's attack. Simultaneously, fear will increase the individual pain threshold. This allows the body to cope with more trauma than normal. Blood flow to the surface of the skin is reduced. Because of this, bleeding from body wounds is also reduced.

The stress of combat will also induce a mental tension. The opponent will be mentally focused on the source of the problem and will be operating with a limited level of consciousness. Their attention will be directed straight towards

you. In this state, the opponent will be unable to hear or respond to advice from any source. They will also be unable to see any activity that takes place outside their direct view.

Psychological research has shown that individual fears will peak before and after a battle. During the battle, the majority of the combatants can focus on the operational task. Soldiers who are bonded together with a team spirit, well led, believe their cause is just and properly trained, will find it much easier to focus on the operational task.

Because of these factors, learning to cope with fear must form an integral part of basic combat training. The training programme outlined later in this chapter can be used to produce close combat fighters who can control their fears.

Your training programme must also include ways of coping with the limiting mind set of focused attention. Learn to expand your consciousness during training so that you can see and hear much more than the direct threat.

The Adrenalin Rush and The Shakes

The natural reaction of the body to stress is the fight-or-flight emergency response. As mentioned in the section on fear control, the immediate physiological response is to prepare the body for either fight or flight. This includes an increase of blood flow to the brain and muscles as well as an increase in strength and energy.

If this energy is not dissipated within approximately 10 seconds, through the fight, the energy is lost through a shaking or trembling process. Your aim in any fight is to attack before the energy level peaks. Use that energy boost to defeat the opponent.

If the opponent allows their energy level to peak, without fighting, the shakes will set in and they will be incapable of reacting positively.

Distracting the Opponent

The ideal time to launch an attack is when the enemy is not prepared for it. Always try and hit first. When the enemy is either faster, stronger or prepared for your attack, distractions become necessary.

The following tactics may be incorporated into your training programme. As your skill develops, you will appreciate the vital fractions of a second and control that these distractions allow you.

Throw.

Throw the nearest object to hand. Make the opponent flinch, blink or stop. This form of distraction will give you a fraction of a second to make your own move.

Spit.

Spitting can make the opponent either blink, vomit, draw back or lift their hands to expose the lower targets.

Spit out anything that happens to be in your mouth at the time of the confrontation.

Feint.

Before carrying out a definite attack, such as a punch, either pretend to or actually use a kick. This tactic will make the opponent act in a predictable manner.

Develop your own personal set of combinations.

Shout.

Shouting and screaming can be used in order to dispel your nervous energy and disorientate the enemy.

By shouting or screaming, you can make the opponent temporarily freeze. The shouting approach can also make your own attack much stronger.

As with all forms of distraction, the enemy may over react or panic. Because of this factor, the voice must be used in a controlled manner and immediately followed through.

Breathe.

Your breathing can also be used to strengthen your attack and confuse the opponent. This can be done by hissing or grunting as you move or attack.

Consider the boxer's mode of breath coordinated striking. Just before you strike, you tense up your stomach muscles. Before the strike lands, either grunt, hiss or blow out half your lung capacity.

Move.

In many fights, the opponent will be operating with a limited level of consciousness. The opponent will both "telegraph" and persist in using the same technique. The simple act of either kicking or using a straight arm strangle will induce the opponent to copy you. Both these situations can be used to your advantage.

Combatants are usually motivated by fear or blind hatred. It is not normal for them to think tactically and respond positively to their opponents attack. Attacks are usually focused on the position of the opponent. The simple act of stepping out of this direct line of attack can confuse the attacker.

Try to remain mobile during a confrontation. This will disrupt the opponents timing and concentration. If your opponent is circling around you, disrupt their timing by either stepping in or out with a side step of your own.

If your opponent is right handed, move round them in an anticlockwise direction. This will keep you away from the much stronger right side of their body.

At other times encourage the opponent to move forward. Their momentum will add more impetus to the force of your attack.

Chapter 2 will contain much more detail on this factor.

Talk.

Talk to the opponent and find out what they want from you. Talking may help to reduce the tension of the situation. It will also leave the opponent more open to attack.

Vary the volume and speed of your speech, this will force the opponent to focus on your voice.

Ambush.

Leave the enemy an obvious opening in your defences. Once their anticipated attack is initiated, you can counterattack.

Pretend.

Pretend to be afraid, injured, dead, competent, brave, stunned or mad. Do anything to disrupt the thinking processes of the opponent. Create a mental block

in the opposition and then use the opportunity this creates to either attack or escape.

Speed

Every individual varies in the degree of speed they can generate in either offensive or defensive techniques. This fact is based on the normal physiological differences.

Other factors can affect individual speed and reaction times. These include, mental alertness, physical well being and the quality of individual combat training. In sport combat, reactions can be sharpened up with a warming up session before a contest. An opportunity for this procedure never presents itself close combat. In this situation, optimum reaction times and positive responses will be dependent on the quality of the training programme.

Not all fights will be lost because the opponent is much faster than you. Slow reactions can be compensated for in many ways. For example, attack first whenever possible, after that, use distractions or combination attacks.

Initiative

Initiative can be defined, in the military sense, as making the first move. This behaviour will force the enemy to conform to your movements.

Taking the initiative away from the enemy places them in a more vulnerable position. Not only have you taken control of the situation physically, you have also taken a more dominant position at the mental level. All distractions are examples of initiative.

Initiative is not just the prerogative of the team leader. It must be fostered in all members of the team. Individual initiative can be fostered through the employment of a structured training programme. Such a programme must be based on the team mission. It can have built-in problem scenarios that simulate the expected operation.

Individual passive or active behaviour in these scenarios should become more innovative rather than indecisive or inappropriate. This training should produce

individually motivated, self-reliant soldiers who are always thinking one move ahead.

Improvisation

Improvisation involves the adaptation of basic techniques, principles and readily available objects to achieve the team mission. The principles of improvisation and initiative are closely related. Both demand a high degree of flexibility and originality from the thinking processes.

The mind set required for initiating action and improvising on the on the battle field can be enhanced by using a combat orientated training programme.

Impulsiveness

Once you are engaged in combat, there is no time to think about specific forms of attack or defence. Your behaviour must be impulsive and more instinctive. This can only be achieved through contact training with an active training partner.

In many sport combat systems, you will receive a grading by displaying standard responses to standard attacks. In close combat, there are too many variables involved to use such a dogmatic mind set. Your response to an attack must break all the rules, the opponents in particular.

After you establish a basic competence in any technique, you must go on to develop variations. This will make your style much more unpredictable, impulsive and instinctive.

Do not waste valuable training time by practising in the sterile mode of bag work. Punch bags are useful for developing combination attacks, timing, distance, impact effect and power.

It is imperative that you go on to sparring sessions. Here you can apply combat techniques on a living, moving opponent who is retaliating and exploiting all of your weaknesses. Your techniques will never be perfect, in this situation, but your impulse to act positively will be much keener. This form of training will also make your reactions much more instinctive.

Impact Effect

Some forms of sport combat award points for perfect strikes. Because no full contact takes place, the effects of these strikes are very speculative. In combat situations you will be faced with someone who moves and even retaliates. Perfect technique is either impractical or may not have the desired effect. At times, the enemy may absorb a punishing attack without registering any pain. This may be due to either fear, knowledge of impending death, shock, drugs or fighting spirit. It may take four or five strikes to create the desired effect. One strike text book kills must be abandoned for a more flexible and sustained assault.

Impact effect on your own body must also be explored from two perspectives. First, you must experience the opponents attack in order to assess your ability to absorb the impact and react positively.

Second, when you either hit or miss an opponent, the effect will be entirely different from the experience gained on the punch bag. For example, a side kick to the opponent's midsection can throw them at least eight feet away from you. You may also be propelled back several feet. At this stage, the opponent may be temporarily winded without serious injury. They are now at a safe distance from you with time to recover. If you have not experienced this form of incident, you are in a very vulnerable position. The opponent is down but far from being out of the fight. This is particularly true for a ground fighter who will no longer offer you the chance to use your superior kicking.

Practice all techniques on an active partner and learn to follow up on everything you do.

Direct Attacks

For economy of space, the techniques illustrated in this text book are all direct attacks. Single technique direct attacks are not always successful.

Your initial attack can be used as a feint. The feint will allow you to observe how the opponent reacts. Feints can also be used to create an opening. This will be discussed later.

Combat Appreciation(S.W.A.T.)

The experience of fear, on the battle field, can disrupt you tactical thinking. In combat appreciation, you must learn to focus your attention on four basic factors. The practical consideration of these factors will help you to assess both your situation and the appropriate course of action. These four factors are:

Strength

Weapons

Aim

Terrain.

1. Strength (Numerical and Physical)

a) YOU: Your strength depends on how fit you are to handle the situation and how reliable your comrades are.

b) THE ENEMY: Is the enemy younger, fitter, faster, fatter, more confident, more experienced, or drug crazed? Are they accompanied by comrades or are they close at hand?

2. Weapons (Legal, Illegal, Improvised and Procured)

a) YOU: Have you time to go for a weapon? Is it safe to go for a weapon? Are there objects lying around that can be used as weapons?

b) THE ENEMY: What weapons do the enemy have? If you can improvise, will they also improvise? Have you adequate defences against their weapons?

3. Aim (Purpose and Attitude)

a) YOU: Your aim, at all times, will be survival at any cost. How you achieve this depends on your appreciation of all the other factors.

b) THE ENEMY: Your opponents aim can include detaining, crippling, raping or killing you. It is up to you to find out fast, by arguing, observing, moving, listening, talking, cooperating, thinking and distracting.

4. Terrain (Surface Conditions and Troop Disposition)

a) YOU: Are you in an area that is familiar to you? Can you use the ground to your advantage? What type of tactics can you use on that terrain to escape or

stay alive? Where is the nearest refuge? Can you step, roll or fall without danger? Where is your nearest back up?

b) THE ENEMY: Is this their territory? From which direction will their support come?

Consideration of these four factors will help you to survive.

Quarter

In a boxing match, when your opponent falls, you immediately go to a neutral corner.

This scenario does not occur in close combat. When your opponent falls, this simply indicates the next phase of the fight. Always continue the fight until your survival is guaranteed.

Never give the opponent the opportunity to recover. Never expect quarter and never give it until your operational aim has been achieved.

Nerve Points

The illustrations in chapter 2 show 32 frontal and 17 rear targets on the human body. Not very many people will have the clarity of mind, in the heat of the fight, to remember these precise points.

Just remember that the maximum damage pressure points lie down the centre line of the body from between the eyes to the pubic area. This centre line is usually well defended with body armour or the opponents forearms. The best way to get to the vulnerable areas of the body is to attack either side of the centre line to open up the opponents defence, then attack the centre.

You can also work your way around the opponent and attack the rear areas.

In the heat of the fight, there is a low probability of striking the vulnerable areas with accurate and powerful strikes. Consider using combination attacks to weaken the opponent and break down their defences.

Hand Techniques

The bones of the hand are very delicate and easily damaged. Most people have a natural tendency to clench their fists in violent situations. Because of this fact, some closed fist techniques have been described in this textbook. The fist must only be used when it is protected by heavy duty gloves or knuckle dusters. This will be discussed in much more detail in Chapter 3.

Defensive Stances

Think about this point. If you have the time to adopt a defensive stance, it means that an attack on your person has been either unsuccessful or you have time to perceive an attack on your person and time to adopt a stance.

On many occasions your perception of an attack will be preceded by a feeling of semi-consciousness after a surprise attack or else your body hurtling to the ground after a rear attack.

Stances are secondary to learning how to run from, duck, dodge and parry attacks as they occur. Stances are also secondary to learning how to break your fall and carry out a defence from the ground.

If you have time to perceive an attack, that time would be better spent either escaping or else attacking, rather than presenting a static target and the static mind set that stances can encourage.

Use stances as part of your distracting techniques. For example, adopt a boxers stance and use your feet.

Despite these points, stances for stick, knife and unarmed situations will be discussed further in Chapter 2.

Foot Techniques

In sport combat, many foot attacks are directed at difficult to reach areas. For safety reasons, kicks are never allowed to the most vulnerable areas. These areas include the ankles and sides of the knee cap.

Try and keep your kick and sweeps low where they are at their most powerful. This approach will keep you away from the opponent's hand and grappling techniques.

The terrain you are fighting on will restrict the type of foot techniques you can use. Try to revise foot techniques on a wide variety of terrain.

Body Movement

Text book illustrations always fail to convey the degree of body movement involved in any technique. The figures used in illustrations can only represent a single phase of a physical action. Do not slavishly follow the illustrations. It is important that you modify the techniques illustrated in order to suit your height, dress and situation.

In close combat, you must move continually. Keep stepping both in and out of the opponent's line of attack. This will disrupt their timing. Also sway, bob and weave in order to avoid strikes. Body movement is the priority in avoiding attacks. This is because ducking and dodging is much more instinctive than blocking techniques.

Holding the Opponent

Grabbing or holding the opponent will place you at a disadvantage. With your hands employed, your defences are restricted. This is particularly true when you may have to fight with more than one person. Always weaken or distract the opponent before trying to apply a hold. When you go for a hold, try to apply it to the hair, ears, testicles, throat or fingers. Also use pincer grips, arm and leg locks, chokes and strangles.

The application of holds depends on the successful use of distractions and combinations.

Holding a Weapon

Holding a weapon can place you at a disadvantage, if you are focused on looking for an opening to use that particular weapon.

The weapon can also be used as a distraction by you. While the opponent is focused on the weapon, attack by any other means.

Unconventional Techniques

Survival in combat can be attributed to many factors other than numerical and technological superiority. History has shown us that many a battle has been won

by a weaker opponent who can disrupt the enemy with an sudden or unconventional attack.

If you pull an opponent's hair it will cause a great deal of distracting pain. It will also make their eye's water. With a good grip on someone's hair it is possible to slam their head into the wall, the ground, your knee or head butt. When you claw at someone's face or throat, their natural reaction is to either copy the action or at least lift their hands in defence.

This can be used to apply another technique in response to the opponent's behaviour.

A strong grip can be broken by sinking your teeth into the opponent's hand, wrist, cheek, throat, nose, eye brows or the lower part of the leg.

If you know the opponent's style, unbalance them mentally by breaking all their rules of engagement.

Emergency Techniques

In some standing or grounded situations you may become either blinded, stunned, shocked or surprised.

Do have a set of well rehearsed techniques that do not rely on visual contact.

They will occupy the opponent and give you time to recover.

- Trap their arms in a bear hug. This will allow you to stamp on their insteps, use head butts, or bite their throat and face.
- Grab a handful of hair and move back, pulling their head into a knee lift or slamming their head into the ground.
- Push the palms of your hands up the opponent's cheeks. Your thumbs will fall naturally into the eye sockets. At this stage use one hand to palmheel the lower body targets.
- If the opponent has their back to an obstruction, you can palm heel the chest area. This will whip lash their head into the wall and back into your head butt.
- Grab at their throat and attack the groin area with the free hand.
- Grab the groin area and attack the face area with your elbows or head butts.

Training Sessions

For combat efficiency, the training requirement is twice weekly for one year.

There are two main reasons for embarking on a training programme.

First, the ability to fight in either armed or unarmed combat is not a skill that can be learned from either books or videos.

Second, some individuals do not possess the ability to fight and find it impossible to be totally aggressive.

For these reasons, a training programme must be employed in order to assess the fighting ability of individual soldiers. There is no point in learning technique from books or videos unless you can apply it to a living, retaliating opponent.

Knowledge is the reserve of the instructor who may or may not be able to fight. Fighting experience is the reserve of those who can survive.

The length of the training programme also depends on the operational role of the troops involved. This may vary from a short but intensive programme to instill self confidence, to a longer programme for training future instructors.

Each training session should last for two hours. An all round training approach can be tailored to cater for the units operational requirements. A basic training session would contain the following elements. These elements will be discussed in more detail at the end of this chapter:

10 min - Safety checks

20 min - Basic sparring drill

20 min - Bag work revision

20 min - Ground work revision

20 min - New material

10 min - Free sparring

10 min - Match fighting

10 min - Bag work revision

10 min - Ground work revision

20 min - Yoga and Visualization

Revision Sessions

To promote speed, self confidence, and fighting skill, the revision sessions must contain as many variables as possible, for example;

1. The attack can be structured as a rush attack, rear attack, side attack, group attack, ground attack or combination attack.
2. The defence can incorporate withdrawal, ground fighting, friendly support or weapons.
3. The opponent can be either tall, short, fat, thin, drunk, crazed or armed.
4. The conditions must also be varied. Train within a crowd of people, in a cramped room, in darkness, your hands may be tied or you may be blindfolded or stunned.

The stunned condition may be simulated as follows:

1. Place the end of a brush shaft on the ground.
2. Place both your hands over the other end and then rest one of your ears on top of your hands.
3. Run round the broom shaft without lifting the shaft off the ground or lifting your ear from your hands.
4. After 30 seconds of this exercise, try to either adopt a fighting stance or use a punch bag.

Close Combat Training

There should be at least four phases to close combat training. Furthermore, these phases must be broken down into stages. This will help to ensure that your training programme has a progressive structure.

Phase 1 - Basic Techniques.

Stage 1 - The Basics.

Practise single offensive techniques from all sections of the text book. Make maximum use of the training aids, including punch bags, static and active partners. Practise until you have a thorough knowledge of the basic techniques at the different fighting ranges.

Stage 2 - Defence.

Practise different defences against the same offensive technique. Learn how to counter attack as well as defend. Keep the physical contact under control so that

undefended strikes do not have a serious impact. Move around the training floor using stepping drills and distractions.

Stage 3 - Combination Attacks.

Combine two techniques from one discipline only. One partner remains passive and simply observes the line of the attack. Use this procedure until you are proficient in using combinations.

Both combatants must be continually moving round the training floor. This will teach you how to judge distances and time your hits. By acting as an observer you will also learn how the combination is set up. Pay attention to the way most moves can be "telegraphed" by the attacker, long before they materialize.

Stage 4 - Defence.

Practise several defences against the same combination attack. Use light contact only at this stage. Again, you must make maximum use of the floor space.

Phase 2 - Free Sparring

Before this phase, sensitivity training and sparring drills may be introduced. The aim of free sparring is to develop your spontaneity in attack and defence. In this phase, there is no collusion between the combatants. The techniques used in free sparring are personally selected and tested out by each individual. You are now learning to use offensive and defensive techniques on an opponent who has the same intentions.

Free sparring is a vital phase in your training programme. It will bridge the gap between basic technique and match fighting. Free sparring is used to develop your fighting ability. It is the practical application of the former four stages you have just progressed through.

Lethal tactics are not permitted at this stage and all strikes are directed to full body armour.

Always work in teams of four. The teams are made up from two combatants with one observer each.

Spar for one minute and then allow the observers to discuss both combatant's

strengths and weaknesses. The observers are also expected to control dangerous play.

Two sparring sessions, with a total of two minutes, will be quite sufficient in the early stages of your training.

Constantly change your training partners. Fresh partners will demand a fresh approach on your part.

Phase 3 - Match Fighting.

A match fight is a knock down contest to establish the superiority of a particular fighter. There is no time limit to a fight. A fighter will lose the fight when:

- They fall down and remain open to lethal attack.
- They are knocked out.
- They are caught in a strangle or choke hold.
- They have to submit on account of a lock.
- The observers decide who has lost.

The judgement of the observers is necessary because protective clothing will nullify some of the lethal attacks.

The observers are also necessary because either of the fighters may become stunned and incapable of responding to submission holds.

Phase 4 - Close Combat Drills

Close combat drills will allow you to advance your practical knowledge of close combat without the requirement of lethal contact.

Your knowledge has already been advanced as far as practically possible. You must now use that practical experience to formulate individual drills. The complexity, duration and practicality of these drills will depend entirely upon the effort you put into the preceding three phases.

Combat drill is the prearranged form developed by the combatants. It is used to practise the application of lethal tactics. At the critical stage, all the strikes are controlled with minimal contact.

The subject areas to cover include:

- Attacks, either front or rear.
- Attacks and counters.

- Combination attacks.
- Weapon drills.

Training Practice

Keep changing the training partners over. This will stop students from becoming too familiar with each other and thus developing a complacent attitude.

During a training session, have a Team Leader detailed to control the class. The Team Leader's role is to formulate a specific training and stick to that programme. The team Leader must be capable of stopping dangerous practices and also motivating the students to maintain a high work rate.

Obstructive Practice

During practice sessions, it is possible to develop an obstructive mind set. This is where you start to anticipate the training partners movements and you apply counter moves. This will slow down your partners development. Allow your partner to practice a move until they are proficient at that technique. Remember that all techniques are usually set up with distracting punches or kicks. Your ability to anticipate your training partners moves will be properly tested during match fighting.

Perfect or Practical

Spend at least two minutes on each technique. Work fast to develop power, speed, recovery, accuracy and tactical movement. Get away from the mind set of doing 200 kicks or 200 punches.. Practice each technique for at least two minutes, even if you only manage 50 repetitions. You must try to incorporate the technique into a fighting framework. The aim is to make the technique part of a defence and attack strategy rather than a sterile exercise in technique.

Bag Training

The punch bag is a passive training aid. Spend too much time on it and you will neglect your defence and ability to react positively to an attacker.

Kick Training

Keep your kick training as realistic as possible. Move back and forward, left and right, counter and use combinations. Close combat is both dynamic and demanding, you must keep moving and remain difficult to predict. Kicks are

powerful techniques, they will have an effect, not only on the opponent, but also on the applier. Anticipate these effects through a rigorous training procedure that involves an active training partner.

Yoga Exercises

The following Yoga exercises will help you to relax mentally and physically:

- Salamba Sirasana - Head Stand
- Salamba Sarvangasana - Neck Stand
- Uddiyana Bandha - Stomach Isolation
- Savasana - Corpse Pose

Total relaxation is neither desirable nor a prerequisite to fighting success.

There is an ideal level of relaxation to be aimed at. The ideal level that allows you to cope with battle field stress and continue to think tactically.

To Blitzkrieg or to Hammer

In a fighting situation, you have two avenues of attack. First, you can Blitzkrieg the opponent by hitting from every angle.

Second, you can Hammer away at the same spot until the enemy is defeated.

For the untrained, the Blitzkrieg is more difficult to activate and is also less instinctive. This is because it demands an active, analytical form of thinking.

Combat is always performed at a very base level of intellectual consciousness.

Thinking, seeing and hearing are usually focused directly on the immediate threat. For this reason, the Hammer approach is a better tactic for the inexperienced fighter. The Hammer is more instinctive, single minded and can be used to break down the opponents covering up tactics.

The physical strength required to defeat an opponent is a limited commodity that evaporates after 5 - 10 seconds of hard combat. The flow of adrenalin, that occurs at the start of a stressful encounter, will sap your strength if it is not controlled.

Using the Hammer tactic will sap your strength if the opponents defence is good. Why persist in using valuable energy on an opponent who can cover up and bide their time until your energy level drops? Against an aggressive opponent, hammering away with a single technique will give the opponent time to switch

tactics and counterattack. For example, why try to head butt an opponent who is pushing away at your chest. You may try the head butt several times before realizing there is no connection taking place. Meanwhile your strength is sapped, the initiative has gone and the mind set of a single tactic will leave you in an impasse, open to counterattack.

Blitzkrieg or Hammer? It all depends on the opponents approach and responses to your attack.

Visualization

The mental practice of visualization can be used to enhance your fighting skills. This is a process where mental and physical feed back can accelerate your practical fighting ability.

If you can hold a mental image of a technique, your practical performance will improve.

When you can perform a technique properly, enhance your image of it through visualization.

Visualization can also be used as a form of battle field inoculation. Consider a specific set of techniques required for an approaching operation. By visualizing these techniques, your fears and stress levels will be reduced.

General Principles

In combat, it is difficult to think in terms of specific responses to specific attacks. Your mind must remain uncluttered from this baggage.

- Fight without thinking, hit first, react second.
- Reduce the targets to the center line.
- Defend the center line, angle it away from the opponents.
- Never fight the opponents fight, do the opposite.
- Keep changing your tactics.
- Dogged determination and flexibility beat perfect technique every time.

CHAPTER 2

Chapter 2 - Intro

This second section will describe in more detail the fundamental techniques outlined earlier. The subject matter will include:

- Pressure points and appropriate mode of attack
- Stances
- Body movement
- Footwork
- Kick defences
- Punch defences
- Basic sparring drills
- Coping with the different fighting ranges and styles

The Pressure Points

Pressure points are areas of the human body that are vulnerable to damage when attacked with the appropriate weapon. The effects of strikes to pressure points will also depend upon a combination of the following five factors:

- The weight behind the delivery.
- The speed of the delivery.
- The accuracy of the strike.
- The type of weapon used.
- The opponent's physical and mental state.

Operational dress and equipment will directly influence technique as well as the effect of any strikes. Specific pressure points are difficult to reach, especially when the opponent is moving and attacking you at the same time. The exact pressure points can only be attacked when the opponent's defence has been broken down with strong attacks to general areas. Real combat will never be a display of perfect form. It will always be a display of quick opportunities. There will always be a high rate of low power strikes, forced throws and imperfect techniques. Because of this factor, consider the principle of overkill by using combinations in your attack and defence.

Primary Pressure Points

Front

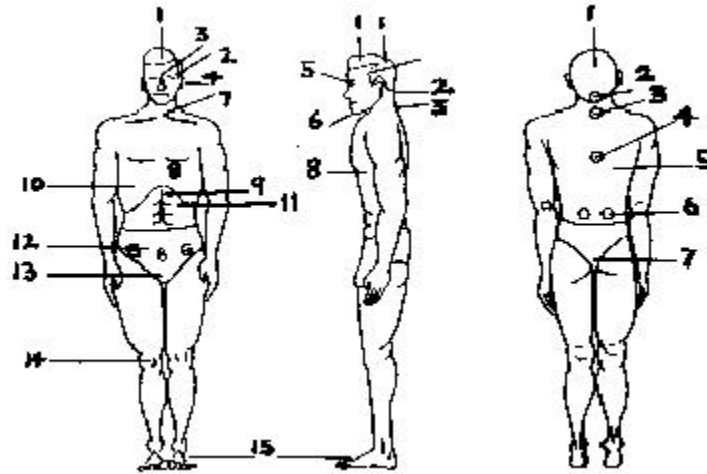


Fig.1

1. The top front of the head can be attacked with:

- Hammer fist
- Palm heel
- Heel stamp

2. The temples lie between the tops of the ears and the eyes. Attack the temples with:

- Palm heel
- Hooking palm heel
- Head butt
- Toe kick
- Knife hand
- Elbow
- Knee
- Heel stamp

3. Attack the area between the eyes with:

- Knife hand
- Palm heel

4. Attack the ears by grabbing or clapping:

- Grab and rip up or down
- Grab and chop with knife hand
- Clap with cupped hands to damage the ear drums

5. The eyes can be attacked with any weapon. Minimum force is required to create maximum damage. The only danger to the attacker is the rigid bone that surrounds the eye socket. Remove the eye by pushing the fingers or thumb in at the top middle of the socket.

6. The jaw line can be attacked with:

- Palm heels to the point to cause knock outs
- Palm heels to the side in order to break the jaw or cause knock outs
- Knife hand
- Elbow
- Kick

7. The throat area targets cover the wind pipe, Adam's apple and the hollow of the throat:

- Fingers and thumbs
- Palm heel hook
- Elbow
- Knife hand
- Pincer grip
- Heel stamp

8. The heart can be attacked with:

- Palm heel
- Side kick
- Roundhouse kick
- Roundhouse shin kick
- Knee

9. The solar plexus area is usually well protected. Any attacks to this area are usually part of a combination that opens up the opponent's defences. Attack this area with:

- Palm heel
- Knee
- Toe
- Elbow
- Back elbow
- Head butt

10. The ribs are usually protected by the elbows. They can be attacked with:

- Forward and rear elbow strikes
- Palm heel hook
- Roundhouse knee
- Roundhouse shin

11. The spleen can be attacked with:

- Palm heel
- Toes
- Elbow

12. The bladder and groin area can be attacked with:

- Palm heel hook
- Palm heel
- Elbow
- Back knuckle

13. The genital area is usually well protected. Direct attacks to this area can be used to draw the opponent's defence down and leave other targets exposed.

Attack this area with:

- Pincer grip
- Grab and twist
- Knife hand
- Knee
- Shin
- Forearm

14. The knee caps are best attacked when the opponent has most of their weight on them. Attack with:

- Side kicks when the opponent is side on to you

- Roundhouse shin kick
- Roundhouse heel kick

15. The insteps have a very delicate bone structure. Attack this area with heel stamps.

Primary (Maximum Damage) Pressure Points

Rear

1. The top front and top back of the head can be attacked with:

- Hammer fist
- Palm heel
- Heel stamp

2. The hollow at the base of the skull can be attacked with:

- Toe kick
- Palm heel

3. The spine at the base of the neck can be attacked with:

- Knife hand
- Palm heel
- Elbow
- Toe kick
- Heel stamp

4. The area between the shoulder blades and the area below the left shoulder blade can be attacked with:

- Palm heel
- Heel kick
- Side kick
- Elbow

5. The ribs are also available in rear attacks:

- Palm heel
- Side kick
- Elbow
- Roundhouse kick

6. The kidney area and up below the bottom ribs may be attacked with:

- Side kick
- Roundhouse kick
- Palm heel
- Elbow

7. The tail bone may be attacked with:

- Knee kick
- Toe kick
- Elbow

Secondary Pressure Points

When these points are attacked, the following effects can be expected:

- Sharp pain
- Stunning pain
- Unconsciousness

The secondary chart excludes those areas susceptible to maximum damage.

This will not guarantee that attacks to these areas will not be either crippling or fatal.

Front

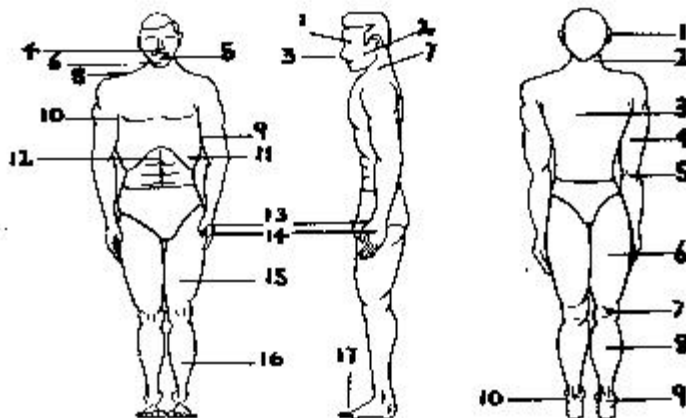


Fig. 2

1. The ridges of bone around the eyes can be attacked with:

- Head butt
- Palm heel
- Feet
- Teeth

2. The cheeks can be attacked with:

- Teeth
- Nails
- Slaps with the cupped hand

3. The nose can be attacked with:

- Palm heel
- Head butt
- Knife hand
- Knee
- Elbow
- Teeth

4. The upper lip area and below the nose can be attacked with:

- Palm heel
- Knife hand

5. The mouth can be attacked with the feet. Do not attack the mouth with your bare hands. This principle will protect you from damaging your hands and serious infections

6. The point of the jaw can be attacked with palm heel jabs. The sides of the jaw can be attacked by inserting your fingers or thumbs up below the jaw.

7. The muscle ridges to each side of the neck can be attacked with either palm heels or the knife hand.

8. Attack the shoulder muscle with the knife hand.

9. The soft inner side of the upper arm can be attacked with:

- Teeth
- Pincer grips
- Single knuckle punch

10. The arm pit can be attacked with thumb pressure directed up to the arm socket.

11. The ribs can be attacked with light palm heel attacks.

12. The solar plexus can be attacked with light palm heel strikes.

13. Attack the wrist area with: Knife edge Pincer grip Teeth

14. The back of the hand can be attacked with single knuckle punches or bites.

15. The full length of the thigh as well as the inner parts of the thigh can be attacked with:

- Roundhouse shin kick
- Roundhouse knee kick
- Teeth

16. The shins can be attacked with:

- Scraping the side of the shoe downwards
- Direct toe kick
- Heel kick

17. Distractions can be achieved by stamping in the direction of the toes.

Secondary Pressure Points

Rear

1. The ears can be attacked from the rear by:

- Palm heel

- Thumb pressure upwards at the hollow of the jaw line that lies behind the ear lobes.
 - The upper jaw area, directly behind the ear lobe, is very susceptible to thumb pressure
2. The muscles at the side of the spine at the base of the skull can be attacked with the knife hand.
3. The areas below the shoulder blades can be attacked with:
- Palm heel
 - Elbow
4. The centre rear of the upper arm can be attacked with:
- Palm heel
 - Pincer grip
 - Knife edge
5. The elbow joint can be attacked with steady pressure to force the whole arm out straight. This is possible after stopping a punch. A grip is retained on the attacker's wrist and the pressure is applied with your chest.
6. The back of the thigh from the buttocks to the knee joint can be attacked with toe kicks or pincer grips.
7. The back of the knee joint can be stamped to affect a take down. This can also be achieved with thumb pressure.
8. The calf muscle can be attacked with:
- Thumb pressure
 - Toe kick
 - Side kick
9. The Achilles' tendon can be attacked with toe kicks or forearm pressure to affect a leg lock.

10. The ankle bones can be attacked with toe kicks.

The Stances

General

There are no superior stances. The value of any stance depends on your fighting knowledge of its weaknesses and strengths. This also has to be coupled with your reactions to the opponent.

One of the best all round stances for quick response remains the wrestling stance. In this stance both your feet are about shoulder width apart. The knees are slightly bent and your body weight should be equally balanced on both feet.

The Basic Stance

The aim of explaining and illustrating this basic stance is not to promote it as a superior stance. This stance has been used to explain the theoretical use of stances. With the working knowledge gained from using the basic stance, you can go on to adapt it to suit your personal situation.

The basic stance illustrated in Figure 3 can be used either defensively or offensively. In the defensive mode, 75% of your body weight is on the rear foot. In the offensive mode, your body weight is equally distributed on both feet. In both cases, the most vulnerable areas of your body are turned away from the attackers direct line of attack.

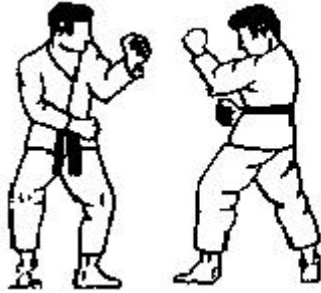


Fig.3

Leg Position. To use the basic stance, point the toes of the leading leg at the opponent. Ideally, the toes and the heel of the leading leg should be in line with the heel of the rear foot. The knee caps are easily damaged in combat. To protect the leading knee cap, transfer your body weight to the rear leg. The leading leg can also be used to protect the rear leg.

Upper Body Position. In the left leading stance, the left leg is in front. The left hand is raised to a point six inches in front of the chin. This hand is used to protect the face. The left elbow is positioned in front of the body in order to protect the rib cage. As a counter against low punches and kicks, your right forearm lies across the lower torso with the hand covering the left groin. Tuck your chin into your left shoulder and look at the opponents chest. This will give you a good view of their arms and legs. When you look at the opponents face, it is impossible to notice the subtle hip and leg actions that telegraph their intentions.

Keep your mouth closed. This will protect your teeth and tongue to a much better degree.

After two months sparring practice, you will learn to relax this exaggerated stance. At this stage you will know what openings you have left in your defence. You must also spend as much time using

the right leading stance. The right side of right handed people is much stronger than the left side. Attacks and defences from the right leading stance will also confuse the opponent. This procedure can also be used by left handed individuals.

The Boxing Stance The boxing stance is not ideal for close combat. This is because it leaves the lower torso exposed to attack. The boxing stance in Figure 4 is not ideal for close combat. This is because it leaves the stomach area uncovered. If an opponent presents this stance, do not use hand techniques. Instead, concentrate on kicks (Fig 5), grappling and ground fighting.

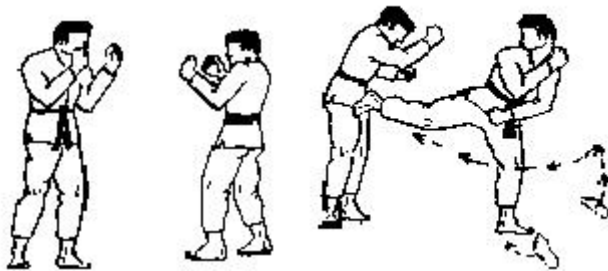


Fig.4 & 5

The Karate Stance The wide stance shown in Figure 6 is not very practical outside the karate hall.

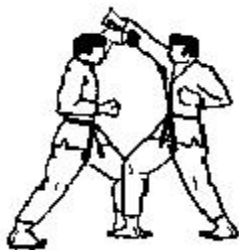


Fig.6

Blocking and Parrying

Blocks and parries are useless exercises, on their own. They must form part of a fluid reflex action that involves a counter attack. A block or a parry should interrupt the path of a strike and deflect it, rather than stop it. The deflection of a strike will reduce its impact and also allow you to retaliate. The end product of your block and parry training must be a fast and fluid style as opposed to a jerky and mechanistic sequence (block, pause, punch, pause).

All blocking actions are very vulnerable to counter-attack. The opponent may trap your blocking arm and use a follow-up strike. Your basic training in blocking and parrying should go through four stages.

- **Stage 1** For a six minute period allow your partner to throw 300 punches at either your face or body guard. These punches must be controlled so that there is no hard contact. The first 50 punches are done in slow time or until the partner can control the technique. With the development of control, the punches can be speeded up. Your partner must concentrate on developing speed, focus and recovery. Your role in this exercise is to watch your partner's arms, feet, shoulders and the attacking limb. Build up a thorough knowledge of the mechanics of that particular technique. Learn about it's path into your defensive zone. In the final 50 repetitions try to add more power to the punches. Power punches are not just generated through arm action alone. Learn to triple the speed, and the power, of the technique by using the full shoulder and hip extension as well as a shooting forward action. These three actions will be explained in more detail later on in this chapter.
- **Stage 2** Practice the blocking action in slow motion. Also learn to duck, dodge and parry the punch.
- **Stage 3** Speed up the technique. Learn to use more hip and shoulder extension in both your partner's attack and your defence. At this stage, retaliation is not considered. There are other skills to be developed before you try counter attacks. Practice all the other skills that keep you from being an easy target. These include; Ducking, Weaving, Stepping out of line, Turning, Shooting forward and back, Bobbing and Crouching.
- **Stage 4** At this stage you can apply your counter attack. The first three stages will have given you a thorough working knowledge of a specific technique. You have not wasted your time watching the opponent's actions in feinting, stepping and attacking. By studying

the path of the strike into your defensive zone, you have a broader concept of the potential follow ups you can use. When you can predict the opponent's actions, you can also attack first and upset their timing.

The Basic Block When you are in the fighting stance, your arms are always directly between your centre line and the opponents. From this fighting stance deflect the striking arm or leg by striking it with the outside of your forearm (Figures 7a & b)

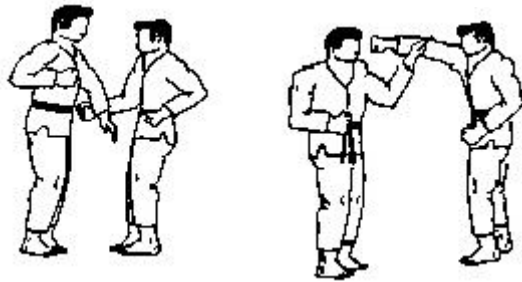


Fig.7a & 7b

When blocking a kick, keep your fist closed to protect your fingers. Try and parry or scoop the kick rather than stop it.

Smothering Block Cushion the effects of kicks and punches to the upper body by holding both arms in front of your body. The forearms are at least six inches away from your body (Figures 8a & b).

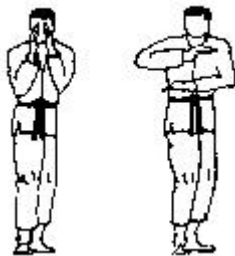


Fig.8a & 8b

Elbow Block Snap your elbow up and deflect the punch with your forearm (Figure 9). If you use this block from the fighting stance, the motion is reduced to a reflex jerk of the elbow. In this block, both your hands are free to grab the attacking arm.

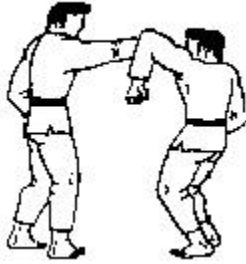


Fig. 9

Palm Heel Block The palm heels can be used to parry and block hand attacks. In Figure 10 the opponent's biceps muscles were palm heeled and the elbows were then grabbed. This can be followed up with head butts or palm heels to the face.



Fig. 10

Out Parry Keep the palm of your left hand facing the ground. With the palm still facing the ground, raise this hand until it reaches chin level (Figure 11a). At this point, snap the palm out to face the opponent. The opponents punch is parried with the outside of your forearm (Figure 11b).

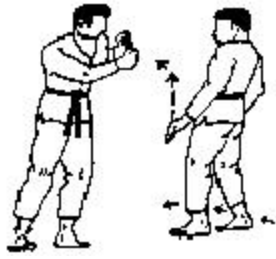


Fig. 11a & 11b

At all times, keep the elbow of the parrying arm down to cover your ribs. The parry should not extend further than your left shoulder width. In the execution of this parry you can also step in and counter attack.

In Parry Keep the upper part of your left arm close to your body. Move your left palm out to the side in a circular motion. At the same time, step back with the right foot and turn your shoulders clockwise (Figures 12a & b).

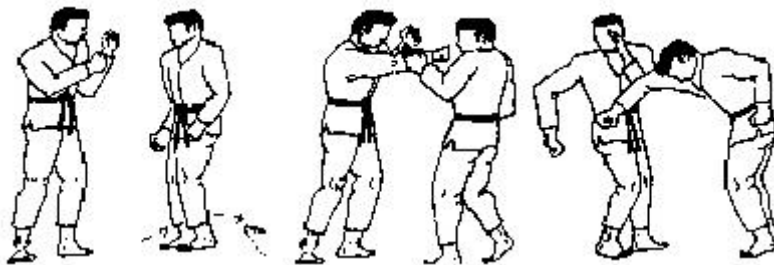


Fig. 12a, 12b & 12c

In a successful parry, the little finger edge of your forearm should parry the opponents attacking forearm (Figure 12b). Add power to this parry by moving your left elbow to the front of your body. Also snap your left palm round to face you just before contact. Figure 12c illustrates the opposite side view of the final stages of the parry.

Basic Footwork

Foot Blocks The threat of direct kicks to the groin will be reduced if you maintain the basic side on stance to the opponent. Also block low kicks by simply lifting your leading leg at least six inches off the ground (Figures 13a & b). This procedure will allow the edge of your foot to make painful contact the opponent shins. Most kicks have an optimum point (or focal point) for full impact.

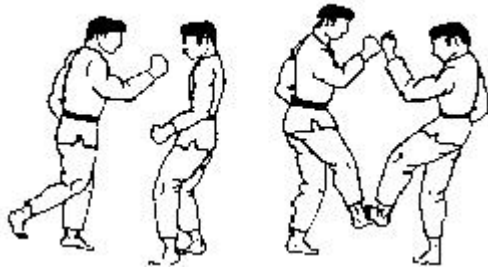


Fig. 13a & 13b

By staying close to someone who uses kicks you may neutralise their kicking ability. There is an inherent danger in getting too close to a kicker. Some of the most lethal kicks are the low sweeping hook kicks to the knee caps. This form of kicking will not be visible when you are too close to the opponent.

Going Behind an Opponent



Fig. 14

- **Method 1** If the opponent has one of their arms extended, pull on that arm so that the opponent is moving forward off balance Fig 14 .Step forward on your right foot in order to swivel in behind the opponent (Figure 14). Ensure that you do not allow your legs to cross.
- **Method 2** Pull on the opponent's head or arm so that they are moving forward off balance (Figure 15a). Swivel on your left toes and then place your right foot in line with both the opponent's feet. Lift your left foot and swivel in behind the opponent on your right toes (Figure 15b).



Fig. 15a & 15b

Stepping Drills

Retreating Retreating should be carried out in such a way that one foot is on the ground at all times. It is equally important that your legs are never allowed to cross. Adherence to these two basic principles should ensure that you maintain a stable posture while under stress or strong attack. With practice, these two rules will become second nature.

Short Retreat Start from the basic stance with the left foot leading as in Figure 16a. The left foot slides back into contact with the right foot (Figure 16b). The right foot is then moved back so that you have returned to the basic fighting stance (Figure 16c).

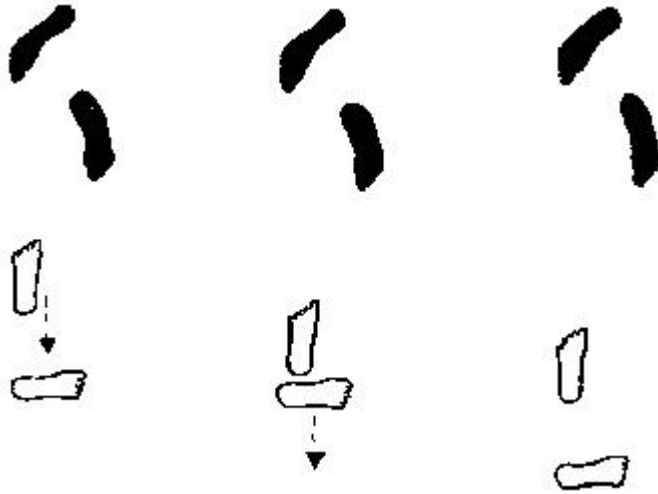


Fig. 16a, 16b & 16c

Moving From a Left Stance to a Right Stance Move the leading left foot so that it is behind the right foot. This is achieved by swiveling on the toes of both feet (Figure 17b). The basic stance is maintained but the body has turned with the right side leading (Figure 17 c). The same principle can be used to advance from the left leading stance to the right leading stance. Swivel on the toes of the left foot and place the right leg in the lead.



Fig. 17a, 17b & 17c

Turning From Rear Attacks Draw the rear foot away from the attack area (Figure 18a) until it touches your leading foot (Figure 18b). Advance your leading leg (Figure 18c). Swivel on the toes of both your feet in order to turn and face the opponent (Figure 18d).

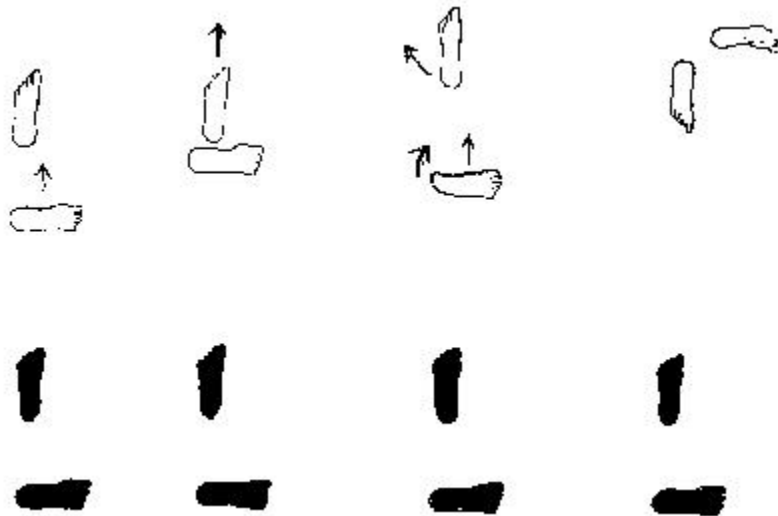


Fig. 18a, 18b, 18c & 18d

Short Advance To advance, slide your right foot up to your left heel (Figure 19a). The leading left foot can be then advanced or used for kicking with (Figure 19b)

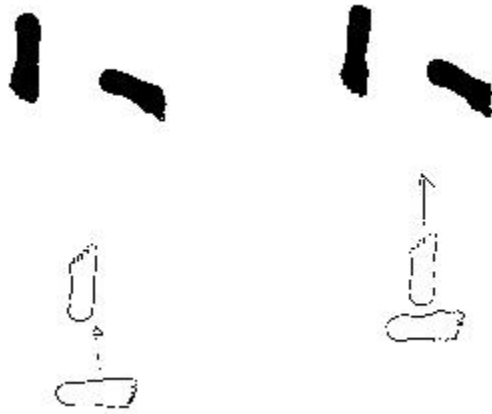


Fig. 19a & 19b

Side Stepping

Long Side Step To side step to the right start by sliding your left foot back into contact with your right foot (Figure 20a). Take a wide step to the left of the opponents line of attack with your right foot (Figure 20b).

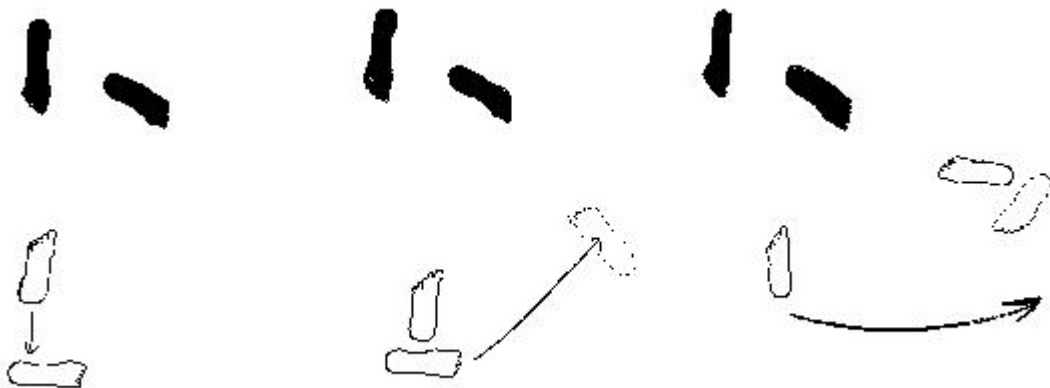


Fig. 20a, 20b & 20c

Swivel on the toes of the right foot (Figure 20c) and pull the left foot round so that you are in a right leading stance at right angles to your former position. This move can be used to retreat from the opponent.

Short Side Step To close in much faster to the opponent, simply leave out the initial step in Figure 20a by immediately stepping out with your right foot. Maintain the left leading stance by then sliding your left foot up to the right foot.

Body Movement Tactics

The following seven tactics may be incorporated into your training programme. These exercises have three main functions. First, they will add power to your attacks. Second, they will create the opportunities for you to counterattack. Third, by your upper body mobile you will prove difficult to hit. Even when you fail to block an attack, the act of moving away from that attack will reduce the impact.

These tactics are much more important than any of the blocks and parries. That is because the tactics which follow are much more instinctive and are easier to develop than the blocks and parries. It is much easier to duck or dodge a punch than it is to block a punch. A blocking technique will force you to fully commit yourself to a single punch when you are more likely to be faced with either multiple, simultaneous or combination attacks.

If you are inexperienced, the thinking process involved in blocking a punch is cumbersome. First you have to detect the punch coming. Next, you have to decide how to block it. Following that, you have

to decide how to counter attack or even block the second punch. Get realistic about unrehearsed attacks, try to hit first. If you can't do that, either run for your life, move your body out of the line of fire or try these;

- Ducking. Bend forward slightly at the waist. This will allow punches directed at your face to go over your shoulder. Keep your eyes on the opponent at all times. Recover your stance by springing up again, but not to your former position, go to the side slightly.
- Crouching. Bend your knees slightly in order to allow punches directed at your head to go over your shoulder. Keep your eyes on the opponents chest area so that you can continue to observe their follow up. Crouching can also be used to get you close to the opponents lower targets for knife, stick and palm heel tactics.
- Weaving. Move your upper body sideways to the left and the right. Do this by bending sideways at the waist and pushing off from the legs. For example, to weave left, combine the actions of straightening the right leg, bending the left and bending at the waist.
- Shooting. Move your upper body either directly forward or back by flexing at the waist. Shooting forward will take you in close to the opponent as well as adding power to your strike. To shoot forward, the leading knee cap moves over the leading foot. At the same time, you straighten your rear leg and bend forward at the waist. Shooting back will allow you to escape the full force of the opponents attack. Do this by pushing off from the front leg and bending the back leg slightly. At the same time lean back slightly from the waist. Shooting forward can be modified and more committed by sliding the leading foot forward in the initial steps. Shooting back can be modified by sliding the rear leg back as well. For both these modifications, you must be certain that the terrain is safe and you will not stumble.
- Turning and Acceleration. The speed and impact effect of punches and kicks are not generated by the hands or feet in isolation. The act of turning the hips and shoulders into the target will accelerate all your techniques. To speed up your right punches from the left leading stance consider the following actions. Collapse the right knee in slightly. This will jerk the right side of your body forward. As your knee bends, turn your right shoulder and hip into the target. During this period, your fist will be accelerated towards the target. Further acceleration can be achieved when you extend your shoulder with the punch. This extension is achieved by relaxing the muscles around the shoulder joint and allowing the shoulder mass

to move forward towards your chin. More acceleration can be added by shooting forward during this action. All these individual actions are not designed to increase the distance your fist has to travel. These actions are designed to accelerate your fist over the short distance it has to travel.

- Bobbing. Bobbing is a combination of weaving in one direction, ducking or crouching and then weaving in the other direction. This is a common tactic used in boxing. In this case the boxer weaves low to the right in order to avoid the opponents left jab. When the jab is over the left shoulder the defender ducks low and weaves to their left. This action will take them away from a possible right punch. Bobbing is used by counter punchers. While weaving right to avoid a left punch, they will use a left hook. When they weave to the left, they will use a right hook.
- Hopping. Provided the ground is safe, hopping can be used to counter rush attacks. As the opponent rushes forward you must get out of their line of attack. This is done by simply hopping on both feet to either the left or right of the opponents line of attack. This will disrupt the attackers plans for a vital fraction of a second. That is long enough for you to mount a counter attack. Use hook kicks and punches after hopping.

Feinting

A feint is a physical action used on the opponent to induce a reaction. Your aim is to capitalise on their predicted reaction to that action. The opponents reaction can be anything from a simple knee jerk reaction to their counter attack. Your initial feint must be strong and deliberate enough to draw the opponents attention. As soon as you have the opponents attention drawn to one area, you attack at another point. Initial direct attacks are very rarely successful in their execution. Because of this fact, feints are essential for opening up the opponents defensive posture.

- Example 1 Open up the opponents defence with a palm heel jabs to the face. Follow up with a palm heel attack to the bladder or ribs.
- Example 2 Raise your right rear leg for the initial stages of a snap kick. Plant that right foot in the lead and palm heel the face.
- Example 3 Raise your right arm high in the air. Left jab at the face. Use a low roundhouse kick with your shins to the side of the opponents knee cap. This will break the opponents leg.

Drawing

Drawing is the act of deliberately leaving an opening, a small weakness, in your defence. The opening can be either subtle or obvious, but it must be enough to induce the opponent to attack that area. For example, lowering your hands will induce attacks to the face. As soon as the opponent commits themselves, you are in a position to ambush the predicted line of attack. The arts of drawing and feinting can only be learned through the trial and error of sparring. Drawing and feinting will induce the opponent to conform to your movements. You will take the initiative away from the opponent and actually control their movements.

Basic Sparring Drill

The two sparring drills from this section are designed to build up your sensitivity and reflexes to the opponents movements.

Drill No. 1 Right Punch and Out Parry

- Both you and your partner stand in the right lead. Your forearms are touching with your hands at shoulder level. (Fig 15a) At all stages of this drill you must maintain contact with your partners arm. This contact will help to develop your sensitivity to your partners actions.

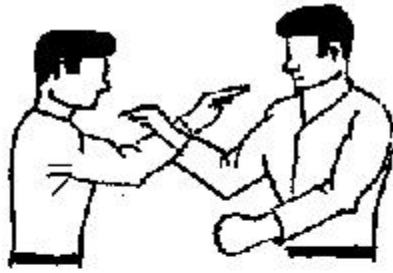


Fig 15a

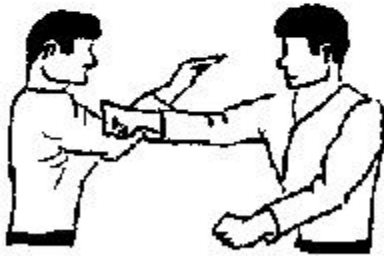


Fig 15b



Fig 15c



Fig 15d

- Your partner shoots forward and attempts to punch your face. (Fig 15b)
- You execute an out parry, shooting back at the same time. You roll your forearm around your partners and force their arm down. As an alternative drill, this stage may be omitted. Simply keep your palm up at shoulder level and return a punch from that position.
- After forcing your partners arm down, you execute a punch of your own. (Fig 15c) Your partner continues the drill by carrying out the parry and returns the punch again.

Drill No. 2 Right Punch and Elbow Block

- Both you and your partner stand in the right leading stance with your forearms touching. Your partner executes a right punch while shooting forward.
- You shoot back and raise your elbow to parry the punch. At all stages of this drill you must maintain contact with your partners arm.
- You then drop your elbow and parry the partners arm in the opposite direction.
- Finish off with a right punch of your own. At this stage the drill continues. Always shoot forward on the attack and then shoot back on the defence.

Fighting Distance Fundamentals

In close combat there are three ranges to be considered. These are long range, close range and ground fighting. You must learn to recognise the fighting style of your opponent. Never fight an opponent on their own terms. Always go for the tactical moves they are not using. At the long and close ranges the tactics can be either offensive or defensive. There can also be single or multiple assailants and defenders.

The ground fighting range adds a more complex dimension to the tactics. This is because a ground fighter can be offensively orientated despite the fact that their opponent is standing. It is not necessarily the case in ground fighting that both protagonists are

on the ground. The tactics for ground fighting will be treated separately in the final chapter.

Long Range Offence The opponent is usually taller than you and has the advantage of a longer reach. They will be attacking you with kicks and jabs, keeping you at arms length. Counter this type of attack by:

- Going to the ground and attacking their legs
- Retreating to force them into a forward momentum. This momentum can be side stepped or hopped away from before striking out.
- Parry the fist attacks and move in fast to counterattack at close range.
- Side step and kick.

Long Range Defence The opponent is moving around you fast. They are using jabs, kicks and side stepping to keep away from you. They will concentrate on countering all your approaches. Counter this type of defence by:

- Using side steps to disrupt their circling tactics and close in.
- Covering up and closing in fast to use close range tactics.

Close Range Offence The opponent may be shorter than you. They move inside your guard very fast and attack with elbows, knees, head butts and grappling tactics. Counter this type of offence by:

- Using your knees and palm heel attacks to force them off you.
- Retreat fast at the first opportunity and keep them at bay with your kicks and long punches.

Close Range Defence The opponent sticks close to you and spoils all your tactics by parrying, grabbing, grappling and using counter attacks. Counter this type of defence by:

- Breaking away and using long range offensive tactics

THE TEXT BOOK OF CLOSE COMBAT

CHAPTER's 3 & 4

THE FIST AND OPEN HAND TECHNIQUES

General Warfare Tactics. For Public Information and Research Only.

Public Domain Information.

General Comments on The Fist

The skin and bones of the fist are liable to suffer much more trauma than the objects they connect with in a fight. The skin covering the knuckles is very thin and liable to break open when it strikes a solid surface. When you punch an opponent in the mouth, the skin will cut open by the opponent's teeth. This will lead to other health problems, including infection with AIDS, hepatitis, jaundice, and other debilitating problems. Compared with other weapons of the hand the fist is not a reliable, long term, general-purpose weapon. Despite this reality, the fist remains the principal weapon in close combat for the novice fighter. This is because it is a natural, nurtured and cultural expression of aggression.

Natural It is a natural expression of aggression because most people will clench their fists when they are under stress. In many cases, individuals will telegraph their intentions by approaching you with their fists clenched. In conflict resolution, where the minimum amount of force is required, the approach of the individual who intends resolving the situation is open handed. This is instantly recognised as non-offensive. The individual who intends using a sucker punch will also use this open handed approach.

Nurtured A false sense of security in the use of the fist can be nurtured through success in childhood fistfights. The bones of a child's fist are more pliant than

adults. There is much more give when a child's fist strikes another's skull. Adult bones are much more solid. When bones connect in a fight they do not bend or spread, they will splinter and break. Success in playground fights will not prepare you for adult combat.

Cultural From a cultural perspective, the sport of boxing is very popular and the media, to represent aggression, uses the fist. These factors can lead to individuals emulating their screen or ring idols by using their fists. It must never be forgotten that boxing is only a sport. It is now a sanitized version of a very practical form of close combat. Boxing originally included; cross-buttocks, choking, eye gouging, foot stamping, tripping, head butting, spitting, headlocks, kicking and arm locks.

Because of these cultural and natural tendencies, it is inevitable that individuals will have to either defend themselves from or resort to fist fighting in close combat. For that reason, this chapter will illustrate several fist techniques. When the fist is used in combat, it must be protected with a knuckle-duster or sturdy gloves.

Punching

For the purposes of both defence and attack, spend at least one month in daily practice of the basic punch. This practice will not be wasted; you will develop your attacking muscles so that you can deliver more powerful attacks.

Coordinating the following seven principles will develop your power punches:

- Defend yourself with both arms in front of your body, close to the centre line.
- Keep your arms only slightly tensed.
- Wait until your fist moves out. Then increase the impact by moving your shoulders, hips, legs and feet towards the target.
- Breathe out during the punch.
- Just before contact, tense the fist and lock your wrist so that the hit is solid.
- To reduce ligament and joint damage, the arm is never thrown out to its full extent. Finish the punch with your arm still slightly bent.
- For the recovery and your defence, relax your retreating arm slightly and get back on guard.

The Basic Punch

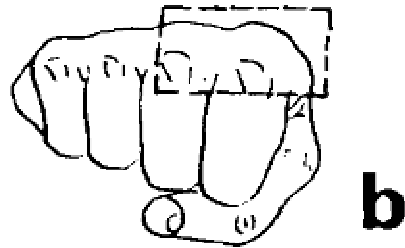
The basic punch starts with the fist palm up against the hip (Fig1). Your feet should be in line and shoulder width apart. Imagine that at arms length there is a centre line from head to toe and you direct your punches into it. On the full thrust of your arm, the palm of your hand is facing down. To lock your fist for the impact, push the thumb side of your fist forward. The back of your fist should be straight with the forearm and locked so that the wrist can cope with the impact.



1

The perfect fist is made by having point A (Fig.2a) protruding slightly further than point B. The figure in 2a shows how the average person will make a fist and therefore the fist needs a pair of sturdy gloves to protect the knuckles, particularly at point B. It is important that you develop your fist until you are only using the two knuckles as shown in Fig. 2b.

a

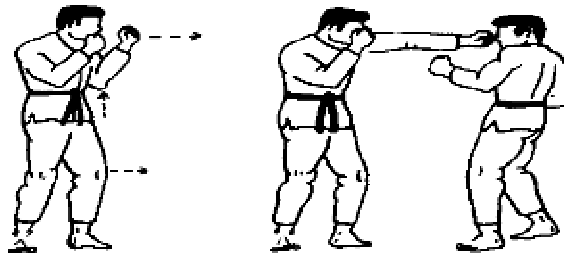


2

Consider this point, how long can you wait in order to develop a complete fighting style incorporating the fist? Leave out the fist fighting and your training programme will accelerate. The better alternative to the fist is the palm heel. This technique will be illustrated later in this chapter.

The Left Jab

Jabs are used to loosen up the opponents defence, block their vision and distract them. When the fist is punched out, your body weight should be off the leading leg and your shoulders add impact by turning into the target. When your fist is almost touching the target, tense it in a grabbing action. As the fist connects, your whole body weight should be on the fist with virtually no weight on the leading leg. For your recovery, relax the arm, pull back fast and distribute your weight equally to both feet (Figs. 3a & b).



3a

b

Combinations with the left jab:

- Low left jab, high left jab.
- High left jab, low left jab.
- Low left jab, head butt to the face.
- High left jab, low right roundhouse kick.

Defences to the left jab:

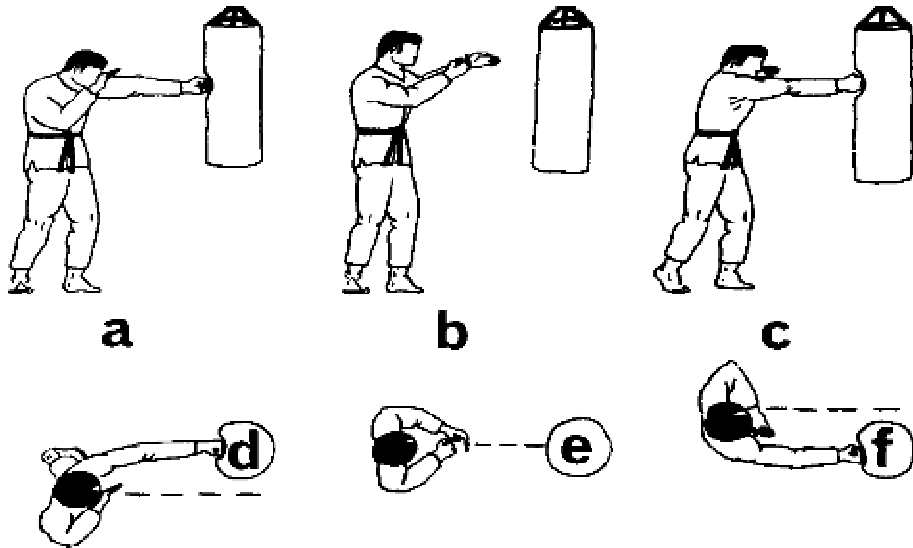
- Right inward parry, left hook.
- Weave right, allowing the jab to go over your left shoulder. Simultaneously use a right hook, then trap the jab in a straight arm bar.
- Weave left, right hook. Again trap the arm in a straight arm bar.
- Bob low, coming up to head butt the face.
- Right parry and a right back knuckle punch.

The One Two Combination

The one two combination is usually made with a left jab and a straight right. The left jab is used to block the opponents vision and distract them. This will leave a clear path for the straight right. Figures 4a, b, c, d, e and f show this sequence.

Check the illustrations for:

- Body sway.
- Fist position.
- The use of the free hand to cover your face.

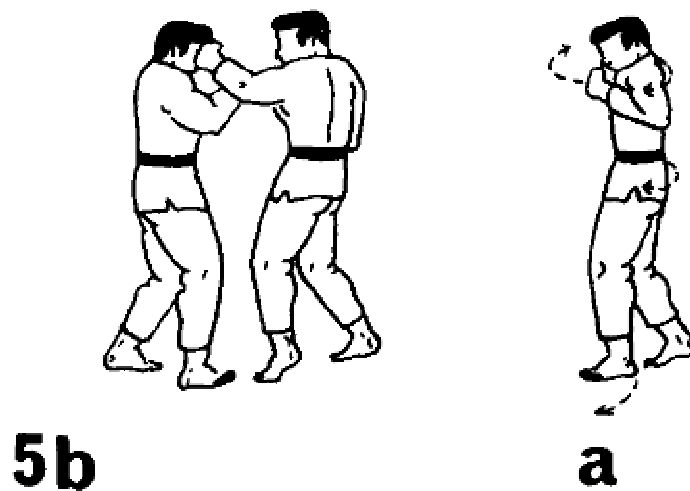


4
Defences against the one two combination:

- Shoot back and shoot forward with hooks to the body.
- Dodge right and then left to let the punches go over your shoulders.

The Left Hook

The left hook is a short arm circular punch. On the way to the target, the elbow is raised, but not as high as the fist. The left shoulder and hip must turn into the punch in order to add speed. At all stages of the punch your palm should be facing you. If you do not have a pair of protective gloves, use the palm heel instead (Figs. 5a & b).



This punch, like all others, is executed without full muscular tension until the target is reached. For the final stages of the punch, your body weight is

transferred to the leading left leg. To aid balance and recovery, your body weight is transferred to the right foot. If you miss the target, this weight shift will help you to maintain your balance.

Limit the forward movement of your fist to an area approximately six inches in front of your shoulder. This will also stop you from over extending yourself if the punch misses.

The main targets for the hooking punches are:

- The sides of the ribs.
- Temples.
- Jaws.
- Sides of the neck.
- The solar plexus.

Combinations using the left hook:

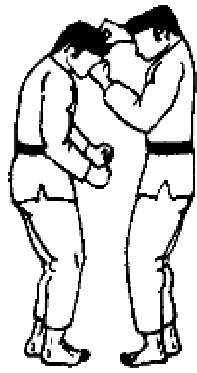
- Left jab, left hook, left cross buttock.
- Left jab, straight right, left hook, right hook.
- Left stamp to the instep, left hook high, right hook low.

Defences against the left hook:

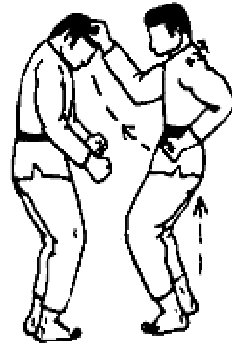
- Cushion the hooks with your upper arms close to your body.
- Duck or crouch.

The Upper Cut

The upper cut is normally used as either a finishing punch or a counter punch. Start by cocking the punching fist close to your hip and bend your knees in a crouching position. Complete the punch by straightening your legs and turning your hips and shoulder into the target. Your palm faces you all the way to the target. Stop the punch and recover when your fist reaches a point six inches in front of your nose (Figs. 6a & b).



6b



a

Combinations with the upper cut:

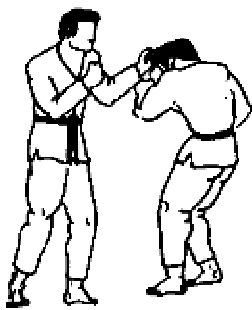
- Left grab at the testicles, right upper cut.
- Hair pull, right uppercut, right cross buttock.

Defences against the uppercut:

- Stand upright.
- Use basic blocks.

The Pivot Punches

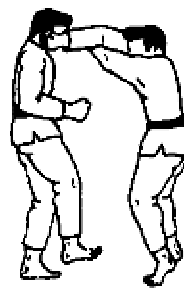
After missing with a left hook to the opponents head, follow up with a back knuckle (Figs. 7a & b).



7a

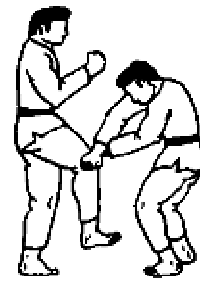


b



8

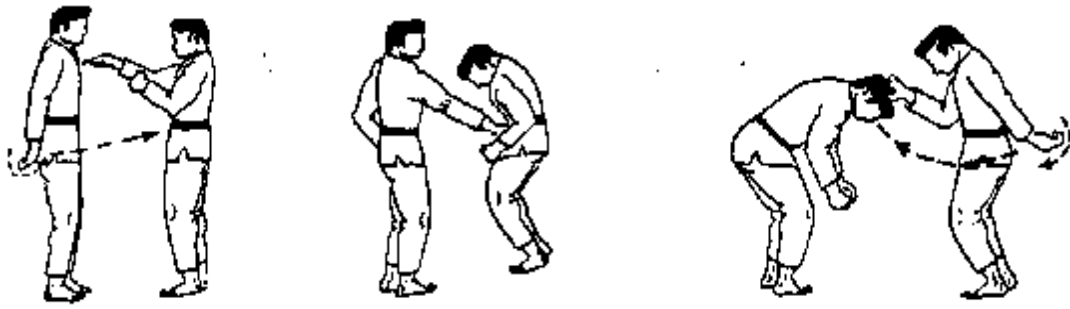
b



a

Double arm block, followed by a double back knuckle (Figs. 8a & b).

Back knuckle to the bladder (Figs. 9a & b).



9

a

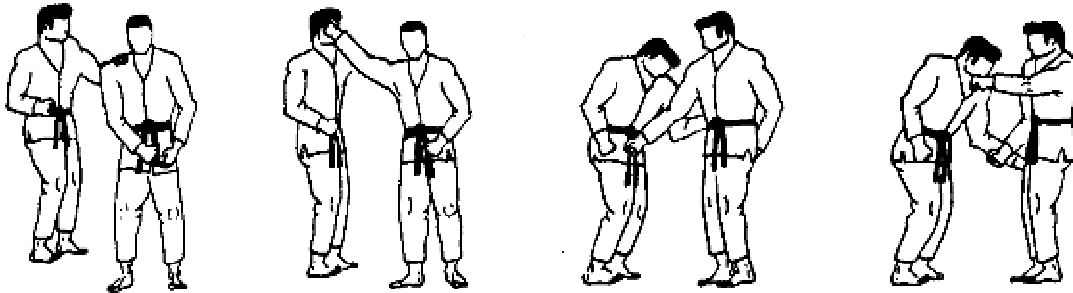
b

c

Back knuckle to the nose (Fig. 9c).

Back knuckle to the temple (Figs. 9d & e).

Back knuckle to the bladder and jaw (Figs. 9f & g).



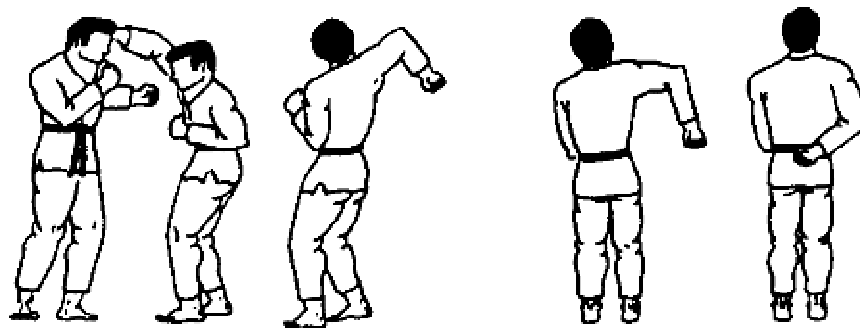
d

e

f

g

To use the tension back knuckle punch, hold your right fist against your right kidney, pressing it in lightly (Fig10a). To release the fist, turn your right hip and shoulder into the target and transfer your weight to your left toes. (Figs. 10b - d). This is a whip action punch, so work on raising your elbow and allow the fist to flick out.



10

d

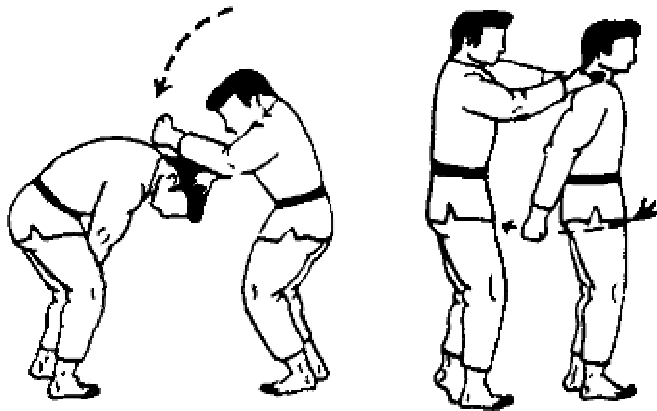
c

b

a

Hammer Fist

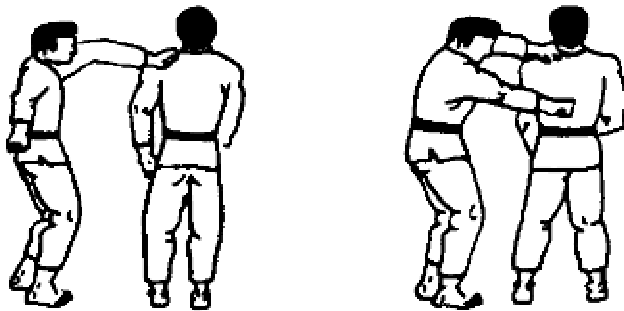
Hammer fist to the spine (Fig. 11a).



11 a

b

Hammer fist to the bladder (11b).



12 a

b

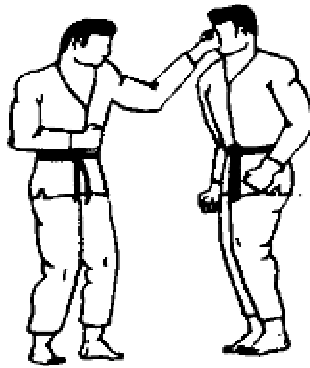
Reverse hammer fist to the kidneys (Figs. 12a & b).

Combination Attacks

Back knuckle jab and a right cross (Fig. 13).

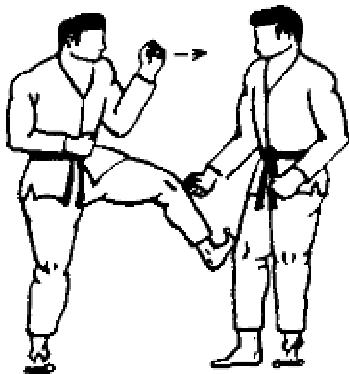


13a

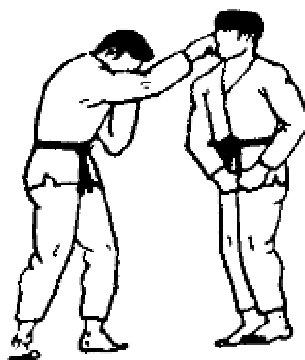


b

Snap toe kick with the leading leg, followed up with a jab and a right cross (Figs. 14a & b). The purpose of the toe kick is to cover the opponents footwork and distract them.

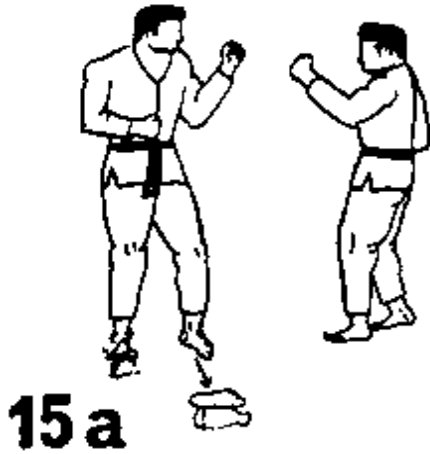


14a

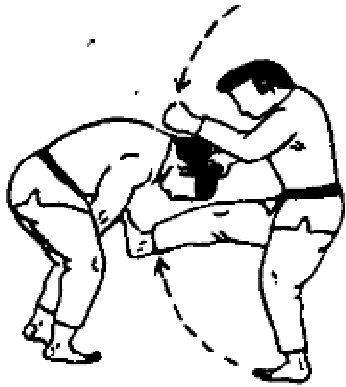


b

Step right with the leading left leg and then use a lower sweep to cover their footwork. Carry out a hand attack to the face while using your left hand to cover the opponents arms (Figs. 15a & b). If you use your shins in the roundhouse kick and direct them to the side of the knee cap, this will break the leg.

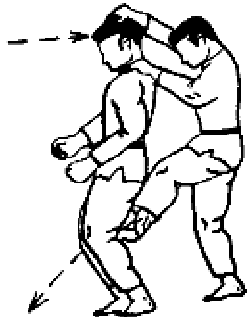


Hammer fist to the spine followed by a toe kick (Fig. 16).

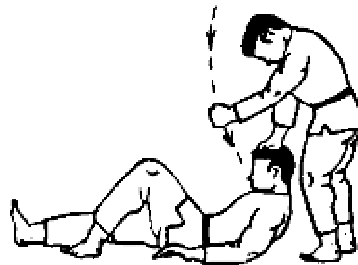


16

Rear attack followed up with a hammer fist to the face (Figs. 17 & 18).



17



18

Thumb Attacks

The point of your thumb can be used to stab or bring direct pressure to many weak points of the body. Particular areas of interest are the main nerves that run through the body and cross in front of the main bones. Here they are very

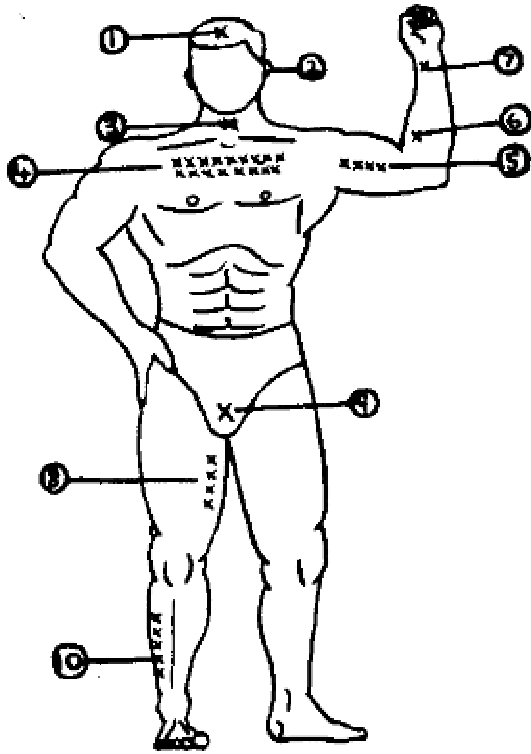
vulnerable to direct pressure with varying results. Some of these points will be described here without using their anatomical names.

- The leg can be collapsed by pressing into the center of the calf muscle at the rear of the leg. The point is half way between the knee joint and the ankle joint.
- The hand can be forced open by pressing both of your thumbs into the tendons and veins approximately one inch above the wrist on the inside of the arm.
- The arm can be frozen by forcing both thumbs into the arm pit to press the nerves against the socket joint.
- The thumbs can also achieve a result against the back of the knee joint, throat area, eyes, behind the ear lobe and up the anus.

The Pincer Grip

The pincer grip in figures 19 and 20 is made by pressing down with the thumb on the knuckle of the index finger. This technique can be used to either create a distraction or death.

19



20

Targets:

1. Hair pull.
2. Ear lobe twist and pull.
3. Adams apple, thrust in deep, inside the two ridges of neck muscle and pull out as far as possible to kill the opponent. This grip will not always be successful, but the attempt will always result in serious injury.
4. Grab a lump of flesh from the chest area, twist and pull.
5. Inside the upper arm. There are many nerves here that can be either pressed or pincer gripped to induce mild shock.
6. The area one inch below the elbow joint on the inner part of the arm.
7. The ligament areas of the wrist and thumb.
8. Inner thigh.
9. Testicles.
10. Outside the calf.

Thick clothing will nullify the shock value of this technique. In some situations the teeth can be used to equal effect on these targets.

Fore Knuckle Fist

Used below the nose, jabbed at the throat, eyes and upper cut into the kidneys or solar plexus. (Fig. 20) The circled area is used for the pincer grips.

Reverse Knife Hand

Put the tip of your thumb on the palm of your hand (Fig. 21). Use this thumb edge of your hand to attack the testicles, throat, below the nose and the eyes.

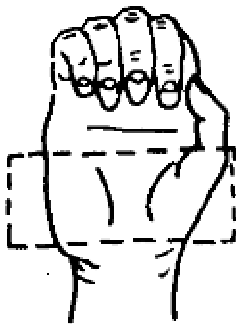


21

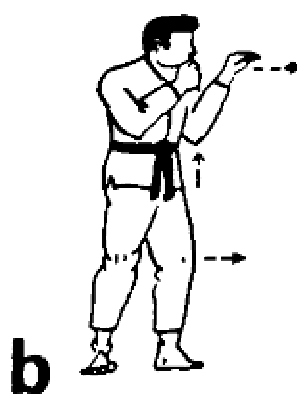
Palm Heel

Because there is less muscular tension involved, the palm heel attacks are much more powerful than the fist attacks. This will become obvious when you practice combination attacks. The palm heel techniques may reduce your reach by two inches but there are many advantages.

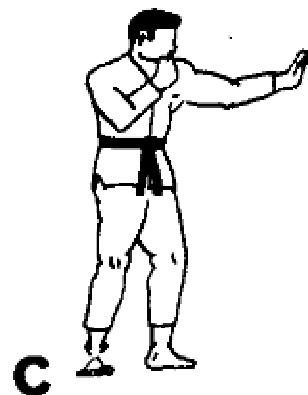
- First, the palm heel delivers and can absorb much more shock than the fist.
- Second, the palm heel is very versatile, it can be used in upper cuts, hooks, jabs and thrust combinations (Figs. 22a, b & c).



22a



b

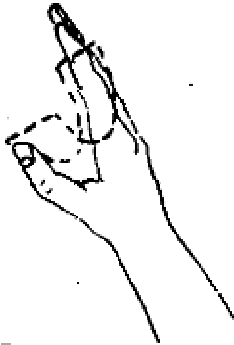


c

"Y" of the Hand

The "Y" of the hand can be targeted to:

- Below the nose.
- Throat.
- Back of the knee.
- To assist in some throws (Fig. 23).



23

The Extended Knuckle Fist

The fore finger knuckle can be used in a left jab to the throat or eyes. (Fig. 24).

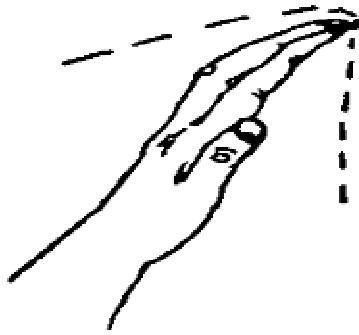
The thumb knuckle can be used if the opponent is side on to you.



24

The Finger Jabs

In the three finger jab, (Fig. 25) the fingers are doubled up slightly so that the ends are even. Jab at the eyes, throat, solar plexus or testicles. Keep the fingers bent forward slightly. If something solid is hit, your fingers are less liable to damage. The fingers are held this way for one and two finger jabs.



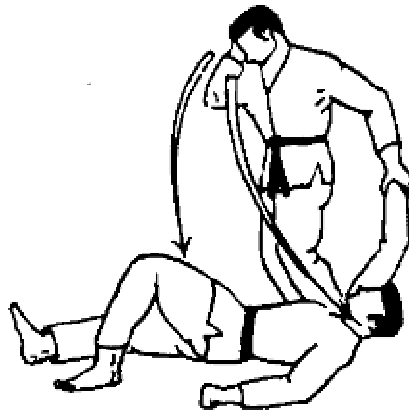
25

The Knife Edge Chop

The area of the hand that strikes the target first is the inside edge of the palm near the little finger (Fig. 26a & b). Just before impact the fingers should be held tightly together and bent back from the palm.



a

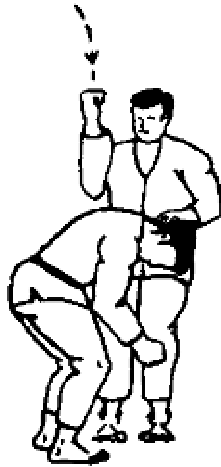


b

26

Elbow to Spine

This attack starts with the palm side of your hand touching your ear. The elbow is raised as high as possible (Fig. 27). To strike the blow, bend the knees slightly and snap down the elbow, palm sideways all the time. Also breathe out as the elbow comes down.



27

Elbow Hook to the Solar Plexus

In this blow the palm of the hand faces down (Fig. 28) and your shoulders and hips turn into the target.



28

THE TEXT BOOK OF CLOSE COMBAT

CHAPTER's 5 & 6

SNATCH SQUADS

Arrest and Restraint Team and Stalking Team Tactics and Training

General Warfare Tactics. For Public Information and Research Only.

Public Domain Information.

Snatch Squads

Introduction

Snatch squads are divided into two categories, Arrest and Restraint Teams and Stalking Teams. The duties and tactics of these two groups are interrelated. This chapter will explain some of the training, planning and preparation used by Snatch Squads. This should give the reader a more realistic appraisal of the skills required for this form of combat.

This chapter will be divided into four sections.

1. The role, composition, tactics and training of Arrest and Restraint Teams.
2. The role, composition and some of the tactics and training of the Stalking Teams.
3. The offensive grappling techniques used by Stalking Teams.
4. Rear attacks.

Section 1 - Arrest and Restraint Teams

Introduction

Arrest and Restraint Teams are employed in urban environments. They are responsible for detaining individuals for processing through the intelligence and legal system. Arrest and Restraint Teams are constrained by minimum force

requirements in their application of restraints and rear attacks. These teams are usually supported by armed and mobile units.

Composition of the Teams

Ideally a 4 person team should be employed to pick up one individual. In a riot situation there are three basic methods of deployment. The first two start from behind friendly lines. This is not the most productive method because the target can see the team coming. Also, the target is difficult to reach without members of the team being injured or captured themselves.

- The team move out fast in diamond formation and run to either the left or the right of the targeted individual. In a riot situation, they should always run past the target to drive back the crowd and isolate the target. Running straight for the target will alert that individual and defeat the aims of the snatch squad.
- The team operate as two pairs. The two pairs run to either side of and behind the target. They then turn and carry out the lift.
- The most productive method of deployment is for the team to operate within the crowd, dressed similarly to the crowd. Upon a prearranged signal, they carry out the lift.
- Another productive method of arrest is to employ the teams in civilian dress from civilian vehicles.

Basic Principles

The four basic principles of come alongs are;

1. Stop. This is the task of Soldiers #1 & 2. The targeted individual must be stopped and isolated from any support or escape routes. At this stage, determine if the target has a weapon in their hands before grappling with them. Attack the nerve points on the legs to either slow down or stop the individual. The upper body nerve points may also have to be attacked.
2. Distract. This is the task of Soldiers #1 & #2. It will be impossible to apply a restraint without first distracting the individual. Distractions include more strikes to the main nerve points in order to temporarily disable the limb you are going for.
3. Restrain. As soon as one of the team applies a successful lock the other team member reinforces that lock with their own lock. The sequence of events is dictated by the targets response. There are no hard and fast rules.
4. Move. Move as fast as possible with the captor conforming to keep the pressure off their joints. Soldiers #3 & 4 are providing cover for all phases of the operation.

The Nerve Points

Figure 1 illustrates the areas of the human body where the nervous system crosses the bones. Either strikes or direct pressure to these point will press the nerves against the bone. These attacks can cause a few seconds of either mental or physical shock which gives you time to apply the restraint. Both forms of Snatch Squad utilise these Nerve Points.

The nerve points numbered from 1-8 are located on both sides of the body. This gives a total of 16 points to attack.

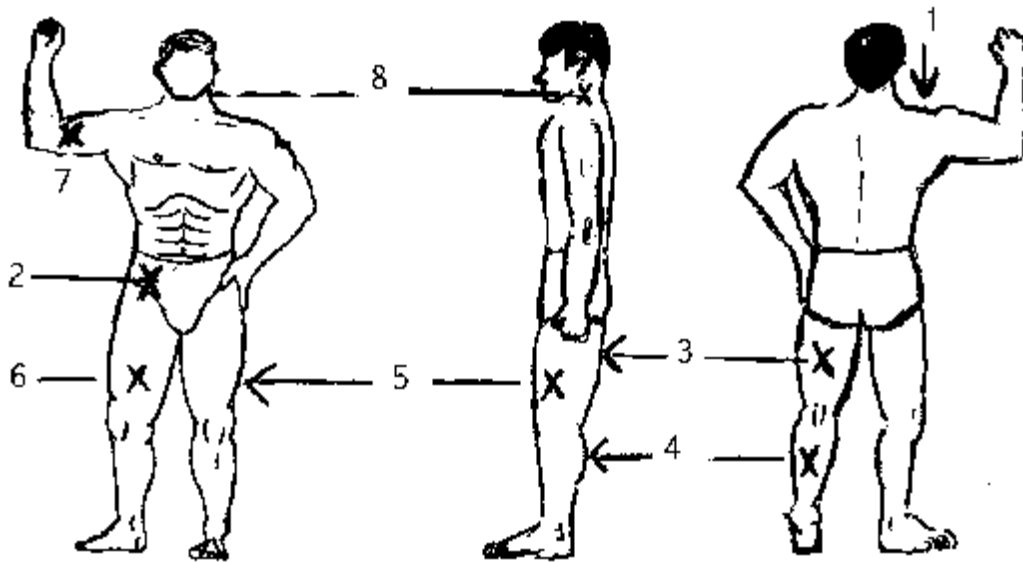


Figure 1

Point 1 - The Superscapular Nerve. This located centrally on the ridge of muscle that runs from the base of the neck below the ear lobe to the shoulder. Hit downwards with the hammer fist, chop or baton edge. Avoid striking to the front of this ridge because you run the risk of breaking the collar bone.

Point 2 - The Femoral Nerve This is located in front of the hip joint where the stomach and leg create a fold. Hit straight in to collapse the leg or jackknife the upper body forward. Hit with a side kick, punch, baton butt or point.

Point 3 - The Sciatic and Tibial Nerves These are located centrally, behind the thigh bone, extending from the fold of the back side to the knee fold. Hit in using toe or side kicks, baton point or butt.

Point 4 - The Posterior Tibial Nerve This is located centrally on the calf muscles of both legs. Hit in using toe kicks, side kicks, thumb pressure, baton point or butt.

Point 5 - The Common Peroneal Nerve This is located on the outside of the thigh, four finger widths above the knee cap. Hit in using side kicks, knee kicks, roundhouse shin kicks or the baton edge. Striking too low, on the side of the knee cap, will break the leg.

Point 6 - The Saphenous Nerve This is located to the soft inner side of the thigh, four finger widths above the knee cap. Hit in at an angle to impact the nerve against the thigh bone. Use toe kicks, knees, baton point or butt.

Point 7 - The Median Nerve, Ulnar Nerve and Radius Nerve This cluster of nerves are most vulnerable two finger widths above the elbow joint. They are on the soft side of the upper arm which lies next to the ribs. Hit this area with a reverse knife hand, punch or baton edge to impact the nerves against the bone of the upper arm and collapse the arm into the hammer lock position.

Point 8 - The Supercavicular Nerve This is located behind the ridge of neck muscle just below the ear lobes. It can be attacked with palm heel, baton edge or chops to this ridge of muscle..

The human body will react in specific ways to nerve point attacks, you can confirm this with hands on training. For example, in order to apply a straight arm bar, get the opponent to jack knife forward with both arms outstretched by punching to the hip joint area (Point 2).

Arrest and Restraint Techniques

The following techniques involve the use of minimum force to achieve your objectives. If you are well trained in these techniques you will find that the physiological damage caused is usually temporary with little or no long term damage.

The locking techniques, if carried to their conclusion, will result in either breaks or dislocations. In arrest and restraint the joint locks are used only as a pain

compliance tool. You want to achieve physical control of the resisting individual, even when the resistance is passive.

All the strikes and joint locks applied during operations are not done to either satisfy your need for revenge or punish the individual. The target will be easier to handle over long distances if you can employ pain compliance techniques. The techniques are used with the express purpose of;

- Controlling the individual quickly.
- Keeping the individual conscious.
- Keeping the individual on their feet.
- Reducing long term injury

Sometimes it will be necessary to take an opponent to the ground in order to restrain them. Make sure that you take the opponent down on their face so that you or your team will not be kicked and punched by the prone opponent. The face down restraint offers you more protection but it is inherently dangerous for an opponent who may be either psychologically or physiologically challenged or under the influence of drugs. It is your objective to keep the opponent alive. You must be conversant with the relevant first aid procedures for dealing with the adverse effects of face down restraints.

Jacket Grabs

If the opponent is wearing a jacket, chop Point 1 and grab the collar from the back and pull it down off their shoulders. This will pin their arms at the elbows.

If the opponent is wearing a jacket, chop Point 1 and then grab the bottom of the jacket from the rear and pull it, along with the collar, over the opponents head.

This again will pin the opponents arms at the elbow.

From the rear, grab the shoulder pads of the jacket, lift up and pull the opponent off balance to the rear. The opponent can be moved short distances in this manner.

Belt Lifts

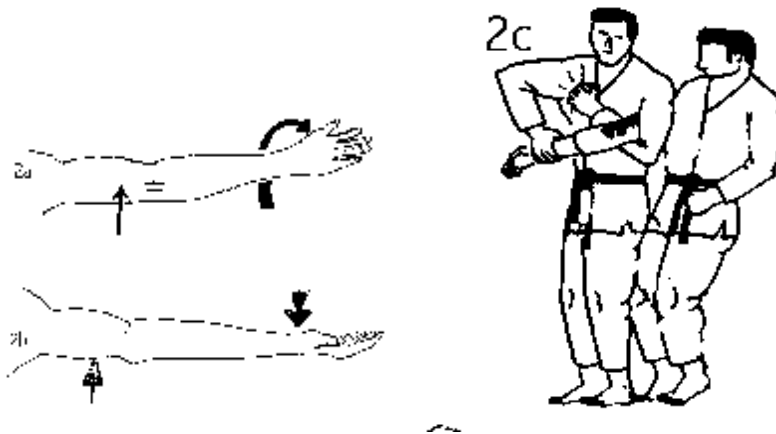
From the rear, lift the opponent up by the belt line with one hand. With the other hand press forward with your thumb on the hollow at the base of the skull. As an

alternative, punch your fist through the targets legs and grasp the front of their pants. Press on the back of the skull to move them forward.

If the target is sitting down, apply thumb pressure in a forward direction to the top of the jaw in front of the ear lobe. When the target tries to remove your hands, apply a wrist lock. The thumb pressure is pressing the nerve against the jaw bone to cause the distraction.

Straight Arm Bar

For the straight arm bar to work efficiently, two points must be met. First, the anchor for the hold is approximately three fingers above the elbow joint on the tricep muscle (Fig 2a). Second, the wrist must be torqued so that the palm is facing up as in figure 2b. The illustration in figure 2c shows the palm in the incorrect position, the palm must face up in order to achieve full control.



The Minor Goose Neck

(Figs 3a & b) This simple wrist lock is achieved by first grabbing the opponents right arm at the wrist with your right hand. The main purpose of this initial grab is to collapse the opponents wrist forward into the goose neck position. Then move into the opponents right side, swivelling on the toes to draw you in close to the opponent, transferring your left arm below their right arm. At this stage place your left palm on the back of the captured hand. The best position is near or on the knuckles so that maximum pressure is exerted on the captured wrist. The opponents fingers must be pointing down.

3a

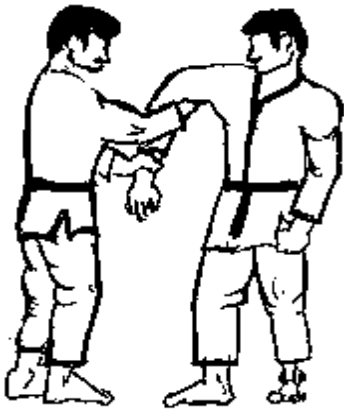


3b



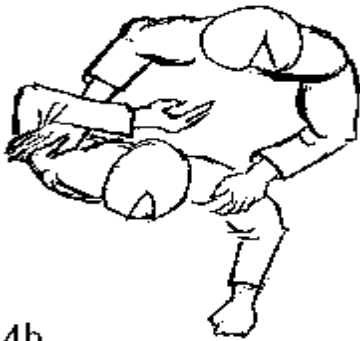
The Hammer Lock

This can be applied from the front if you first chop down on the center of the shoulder muscle (Point 1) to weaken the whole arm (Fig 4a) and grab the opponents right wrist with your left hand.



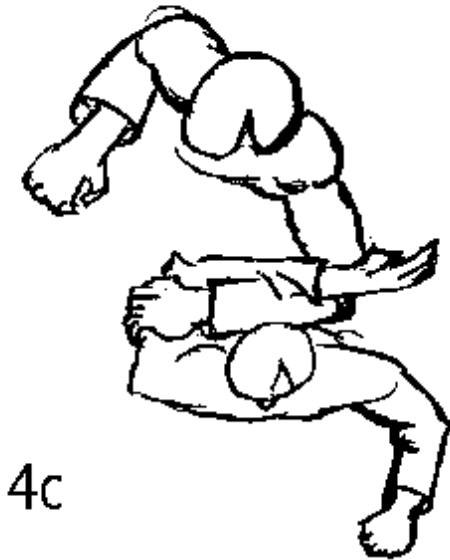
4a

This is followed by punching into the base of the bicep on the inner part of the elbow (Point 7) with your right fist (Fig 4b).



4b

Alternatively, use a reverse knife hand against Point 7. Fold up the captured arm by lifting the arm at the elbow joint and move in behind the opponent (Fig 4c).



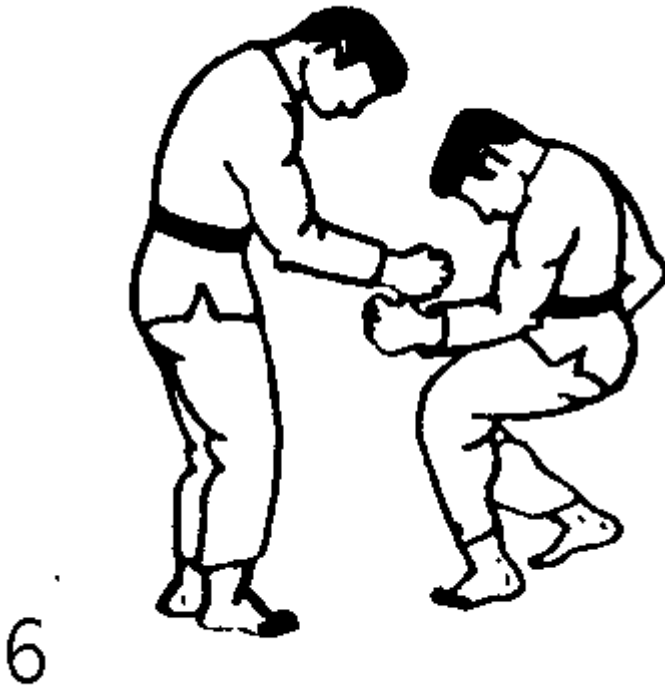
This lock must be reinforced by pulling back on the opponents left shoulder, otherwise they can turn out of the hold .

Finger and Thumb Locks

(Fig 5) The fingers are vulnerable to dislocation when they are bent away from the palm.



With a good all round grip on a single finger, it is possible to control an individual by simply cocking your wrist so that the little finger edge of your hand is putting pressure on the captured finger joint. The real value in this hold is the fact that you can control the direction the opponent movement by getting the palm of the captured hand to face the direction you want the opponent to face.



Training Programme

It will always prove difficult to apply minimum force on an opponent who is not cooperating. In some cases, the aggression displayed by the opposition may demand more force. The rules of engagement must be clear on this point so that the soldiers can operate and achieve the objectives required of them. The Arrest Teams behavior must reflect the degree of hostility displayed by the opposition.

The team must dominate their environment in order to operate successfully.

The training programme should go through four stages;

1. Basic Technique. Practice the individual techniques on a cooperating partner. Learn how to set up techniques with distracting attacks to nerve centres. Because the selected nerve points will not produce long term damage, some trainers have supervised sessions where students can experience low power strikes to these areas. Before striking to the nerve points, students must gauge the power of the strikes from 1 (Low Power) to 10 (Full Power). Start striking with low power and build up the force of the strike until you start to achieve a stunning or shocking effect. This procedure must be supervised by a qualified or experienced instructor. Most of the nerve points lie close to weak parts of the body. Because of this point an improper strike may lead to fatal consequences. During all forms of training it

- is important that partners change over on a regular basis. Different partners will require slight variations in the same techniques. This process will also help to keep the students interested and attentive.
2. Combinations. Learn to flow from one restraint technique to another. For example, if the opponent bends their arm when you apply a straight arm bar, counter this by applying one of the bent arm locks.
 3. Team Work. Successful team work is the result of hard work in realistic scenarios. Each team member will have individual strengths and weaknesses. You must find out what these are before you hit the streets.
 4. Realistic Situational Tests. Your training should reflect the terrain you will be expected to operate in. The instructor must set up a series of scenarios where the team can be tested out and any remaining weaknesses eliminated. These scenarios will also act as battle inoculation, where the team will learn to operate under combat conditions prior to the real event.

Section 2 - Stalking Teams

Introduction

Stalking Teams are employed in rural environments, the battlefield. They are responsible for much more than the capture of targeted individuals. They are also responsible for the disabling or killing of enemy sentries and patrol members. In many instances the minimum force tactics used by Arrest and Restraint Teams may be useful and in some situations. These minimum force tactics can be used to set up the enemy for more lethal tactics. Stalking Teams usually operate alone with limited support. The silent killing techniques employed by Stalking Teams have been omitted from this web page by the author.

Composition of the Teams

Capture or kill operations are usually carried out by a 4 person team. All team members must carry either improvised or manufactured gags, blindfolds, hand and leg cuffs. These items must be ready for quick and silent use, even in total darkness.

Team Leader. The Team Leader is also used as cover for the Attacker when the team are close to the enemy position. If the attack or capture goes wrong, it is the Leaders job to kill the enemy with a silenced weapon.

Cover. There are usually two employed in the job of cover. Their task is to secure the area outside the scene of the attack. They must give the Attacker confidence to carry out their task without having to worry about side issues. On a capture

mission, once the Attacker has the enemy under control, the Covers have a secondary task. The Covers secondary task is to move in, disarm, secure and then carry the enemy out. During this phase, the Leader must provide all round cover. If the enemy is not stunned at this stage they will usually be kicking and screaming. It is imperative that you stay away from their legs until the enemy has been totally subdued.

Attacker. The role of the attacker is to either kill or overpower the enemy. Their fieldcraft training must be of the highest standard in order to achieve this. The final approach to the target will depend upon the terrain and the enemy routines. If the Attacker is spotted on the stalk in, it is the duty of the Team Leader to kill the enemy with a silenced weapon. For this to happen the Attacker must get out of the line of sight of the Team Leader. The Attacker must be trained in dealing with different types of sentry, dress and weapon carriage methods.

The Three Phases of The Silent Attack

The aim of the silent attack is to despatch or capture the enemy without giving away your own presence. There are few, if any real guaranteed methods of silent attack, but the amount of noise created is minimal when compared to conventional battlefield noises.

1. The Approach The approach to the target must be silent, well planned and done with maximum ground appreciation. The appreciation can be gained from preparing the Aide Memoir outlined below. This will help you to decide when to run, crawl or walk in order to reach the target. You must learn how to make maximum use of battlefield noises and animal noises to distract the enemy and close in.
2. The Attack The attack starts from a distance of 10 meters. It is possible to cover this distance before the sentry can react positively. The training programme must be geared towards testing this concept. Causing maximum damage on another human being can lead to either short or long term physiological and psychological damage to the attacker. The training and battle inoculation of the stalking team must involve many different forms of study. This should include rehearsed attacks and studies of how the human body reacts to specific attacks. Other training aids can include reading autopsy reports, attending autopsies, studying forensic science text books, watching films or slides and listening to first hand accounts from operators or convicted prisoners. If the attacker knows what is involved in an attack, they will be able to operate much more efficiently.

3. The Escape The escape needs as much attention as the approach and the attack. This is because the escape may start while the team is still on the approach to the target and are detected.

Capture Tactics

These are usually rear attacks which will be covered in more detail in Section 4 of this chapter. One method of capture is the rear knee take down with a hand clamp over the enemy mouth. A strong pair of gloves will assist in this act and also protect you from bites to the hand. The next priority is to stun the enemy by striking the neck muscle below the ear lobe, or else disable their arms so that they lose control of their weapon. This action is used to stop the enemy from firing their weapon and thus compromising the team. From this rear attack position, it is possible to maintain the mouth clamp and step round to stamp the weapon out of the enemy hands.

Stalking Exercise

Before you consider the team training required for silent attacks, you must be capable of reaching the enemy position first. The last 20 meters are the most difficult to cover without being detected. There are many simple exercises that prove this point. For example, pair off the students, each pair are designated a separate 30 meter box of terrain to exercise in. One student sits in the middle of their box, with a blind fold on. It is the task of the other student to stalk as close as possible to their partner without being detected. If, at any stage, the blindfolded partner detects the others presence, they must turn and face the direction of the approach. It is then the turn of the detected partner to act as sentry.

The art of stalking can only be mastered by constant practice in varying terrains. Once you are within 10 meters of the sentry you are in a position to carry out a rush attack. At this distance, it is possible to overpower the sentry before they can react to your final run in. The team work and fieldcraft standards must be very high. Outlined below is an example of the conduct of a stalking exercise. This plan can be adjusted to suit your standard of training and the operational conditions.

Planning

- Area Select an area at least 300 meters by 800 meters in area. The area selected must conform to the battle field conditions. It may contain; hedgerows, banks, dead ground, buildings, roads, tracks, streams, animals and open ground.
- Enemy Detail off the enemy. They must wear a 100mm by 100mm patch on their back, marked with either a symbol or letter.
- Positions Select starting points for the stalking teams. Also select enemy positions and inform the enemy that they have to patrol a meter strip at the area designated. Send the enemy sentries out to their positions before briefing the stalking teams.

Brief the Stalking Teams

- Brief Seat the team facing away from the exercise area.
- Explain "On this exercise you will be tested as a Stalking Team".
- Point out Using a map or sand table, point out the Start Line, Finish Line and the Enemy Location.
- Time Limits "You have two hours to complete this exercise. All detected team individuals report directly to the Finish Line".
- Revise Cross country movement, bounds, keeping direction, observation, reaction to animal behavior, use of cover, coping with and crossing obstacles, hand signals.

The Exercise

- Mission "Your mission is to close in with the enemy, to at least 10 yards, and identify the symbol on the enemy back patch. You will then move to the finish line".
- Remind Enemy Position, Own Position, 2 hour time limit and Finish Line.
- Questions From the team and to the team.
- Order "Move out now".

End of the Exercise

- Debrief the teams and individuals on the distance covered before detection, team work, fieldcraft and the enemy symbol.

Stalking Team Mission Aide Memoir

1. Mission To take out.... To capture....
2. Reason (a) To gain information (b) Take prisoners (c) Create openings in the enemy defence (d) Capture or destroy equipment (e) Demoralize (f) Recover equipment.

3. Situation (a) Current threat (b) Unit overall plan (c) Enemy deployment (d) Friendly force deployment (e) Move out at
4. Ground (a) Type of terrain (b) Enemy location (c) Location of Ground Sensors, Infra Red Scanners, Proximity Detectors (d) Friendly Force locations (e) Obstacles; Mine fields, man made, natural, farm stock, guard dogs, open ground, tracks, (f) Route out; distances, formations, dead ground cover, land marks, check points, compass bearings. (g) Route in; distances, formations, dead ground, land marks, check points, compass bearings. (h) R.V's, Rally Points, Pick Up Points, Start and Finish Lines. (i) First Light (j) Last Light
5. Target (a) Strength (b) Weapons (c) Unit , Nationality, Religion (d) Alertness, Morale, Training (e) Dress and Equipment (f) Routines, Routes, Habits, Meal Times.
6. Method This depends on 1,2,3,4 & 5.
7. Actions (a) On being located or captured. (b) On Missing the target. (c) On getting lost. (d) On frightening animals. (e) On being ambushed. (f) On seeing the target. (g) On seeing armed patrols. (h) On reaching the Pick up Point. (i) At Rally Points. (j) In Rally Points.
8. Diversions (a) Creating (b) Timings (c) Signals.
9. Prisoner Evacuation (a) Method
10. Casualty Evacuation (a) Method
11. Signals (a) Radios (b) Frequency (c) Call signs (d) Passwords
12. Team Preparation (a) Prep Kit, equipment and dress (b) Rehearsal of all actions and methods. (c) Camouflage to suit all terrains. (d) Questions from and to the team
13. Debrief (a) Report to..... (b) Time now.....

Section 3 - Offensive Grappling Techniques

Introduction

This section contains material on offensive grappling techniques. These may prove useful for stalking teams because enemy prisoners will neither be quiet or passive. The techniques will create maximum damage and because of this, they must not be used in situations where minimum force is the requirement.

Temples (Fatal Results)

Kick with either the heel or ball of the foot. From the front, use a palm heel hook. From the side, use a palm heel thrust. A head butt can also be used, particularly after a throwing technique fails (Fig. 7).

7



Eyes (Permanent Damage)

Use the finger tips, knife edge chop, palm heel or thumbs. The eyes of the grappler are should always be attacked at some stage of the fight.

Ears (Permanent Damage)

Cupped hands clapped over the ears can damage the ear drums. Attack the ears from any angle, particularly when fighting a grappler. As a restraint, grab and turn your wrist down to hold the opponent down. You can also threaten to rip off the ear by holding the ear in one hand and chopping down (Fig. 8).

8



Nose (Permanent Damage)

Almost any part of the body can be used to attack the nose. The force of the attack can be increased if you pull forward on the opponents collar or hair (Fig. 9). Also grip the back of the head to use a head butting sequence of at least five butts.



Jaw (Permanent Damage)

Palm heel the jaw area beside the ear lobe to knock out the opponent and break the jaw.

Neck (Fatal Results)

When attacking the opponents neck from the front, cup your right hand under their chin. Your left hand goes round the back of their head so that you can wrench their head counter clockwise (Fig. 10).

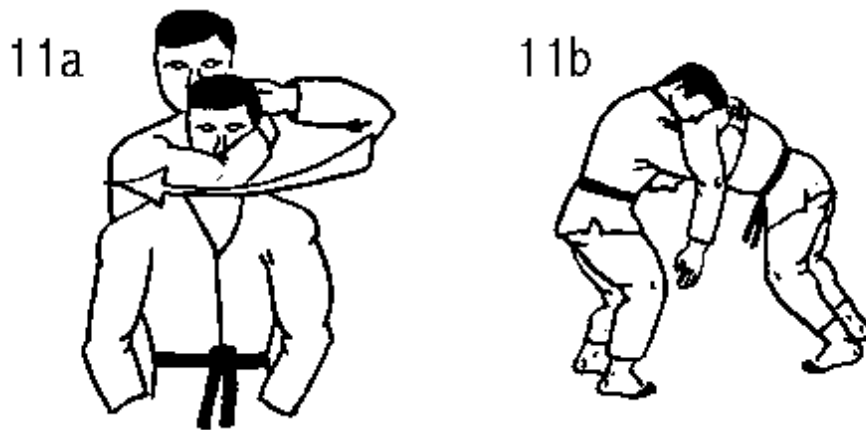


If their chin can be forced toward their left shoulder, you can cause a dislocation. This technique can be used to escape from loose waist holds, bear hugs or to force the opponent to move away from you.

Neck (Fatal Results)

Put your opponent on their knees and wrap your right arm round their mouth. Try to place your right hand round the back of their head. This will bring your right shoulder in close to their head. Reinforce this initial grip with your left arm close to your mouth and round the right side of the opponents head. Twist the head

clockwise as fast as possible to cause maximum damage to the neck vertebra (Fig 11a).



Neck (Fatal Results)

The combined arm bar and head lock (Fig11b) can cause fatal damage. If you either fall back, lift the opponent up or push your chest out, it is possible to break the opponents neck.

Adam's Apple (Fatal Results)

Either bite, chop, punch or toe kick to destroy the air passage to the chest.

Collar Bones (Permanent Damage)

These two bones run out from the throat hollow to the shoulders. They can be broken by, chops, hammerfist, head butts or batons. The approach must be slightly vertical (Fig 12), so that the force of the blow is not absorbed by the shoulder muscle. If the impact does land on the shoulder muscle, it will have a temporary stunning effect.

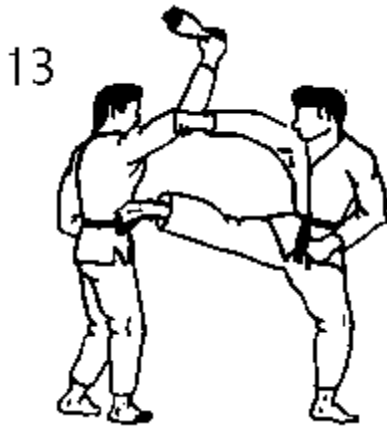


Fingers (Temporary Damage)

Bend the fingers away from the palm. With an all round grasp of a persons finger it is possible to apply a restraint. By simply cocking your wrist and pulling on the held finger, the restraint is applied.

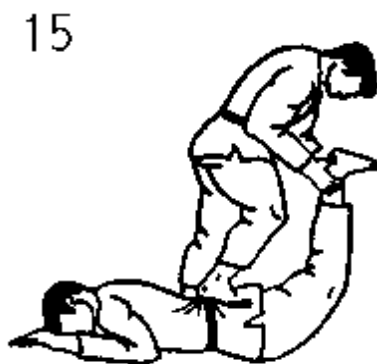
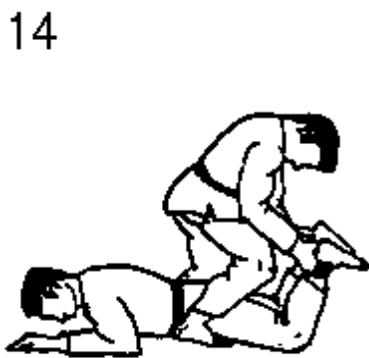
Ribs (Fatal Results)

The lower sets of ribs are more susceptible to breakage. the older the opponent, the more susceptible they are to bone breakages. Attack the ribs with head butts, toe kicks, elbows and side kicks (Fig 13).



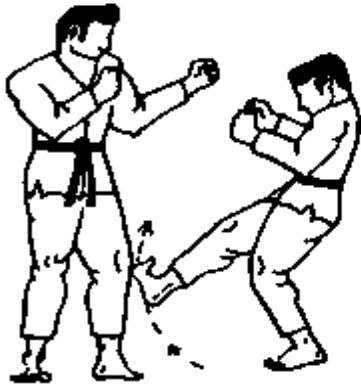
Back (Fatal Results)

With your opponent lying face down, grab their ankles and lift their feet as high as possible (Fig 14). Stamp on the small of their back to sever the spinal column (Fig 15).

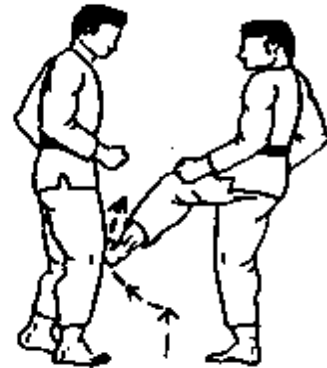


Legs (Permanent Damage)

If you catch the opponent with their weight on their leading leg, execute a straight leg heel jab below the knee cap (Fig 16). Also use a spooning kick to the side of the kneecap (Fig 17).



16



17

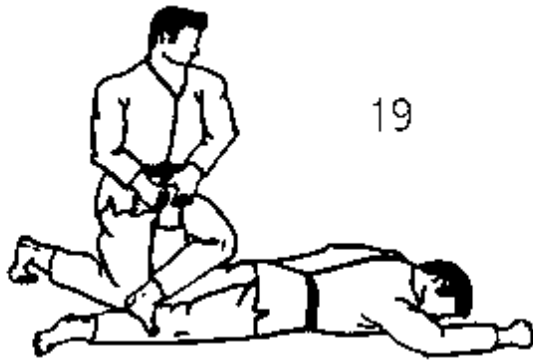
Either the heel or the shin can be used in this attack.

The standing leg lock can be used to restrain the opponent (Fig 18). The bony part of your forearm is used to exert pressure on the lower part of the opponents calf. You can exert extra pressure on this nerve by leaning back and lifting up with your left forearm.



18

The Wedge Lock (Fig 19) can stress the knee and ankle joints. Grab the opponents left foot and push it forward. Your own leg must lie across the back of their knee joint.



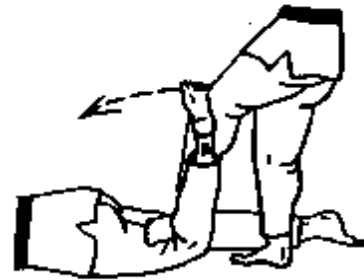
Ankles and Instep (Permanent Damage)

To dislocate the ankle, grab the toes with both hands, place your armpit over the heel and turn your body rapidly to the right (Fig 20a & b). Variation (Fig 21).

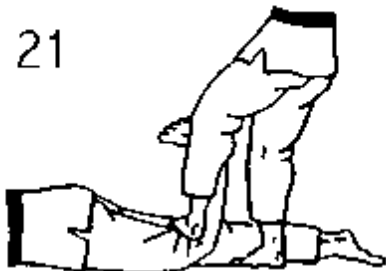
20a



20b



21



The Sleeper Hold (Fatal Results)

To apply this strangle, squeeze both sides of the neck and push the opponents head forward. Unconsciousness should take place within 6 seconds. The two ridges of muscle that run from below the ears to the shoulders have one main function. They protect the veins and arteries going to and from the brain. After

you wedge the opponents neck with your leg, the act of pushing the opponents head forward will push these ridges of muscle back. This reveals the veins and arteries and allows you to close them off (Fig 22).

22



Section 4 - Rear Attacks

Introduction

The attacks illustrated in this section can be used;

- After manoeuvring to the opponents rear.
- After side stepping a rush attack.
- To counter throwing attacks.
- To capture sentries.
- Giving aid to other team members.

Standing Choke Hold

Before starting this technique, use chops to the neck to weaken the opponent. Place your hand on the opponents right shoulder with your palm facing up (Fig 23a). Your left forearm is placed across the front of the opponents throat with your palms coming together on the opponents right shoulder. Keep your forearm as low as possible on the throat at this stage. Pull back on your left elbow and right hand while pressing your head and chest close to the opponent. To stop the opponent from either throwing you or wrestling out of the hold, break their balance back with one of your knees in the small of their back (Fig23 b).

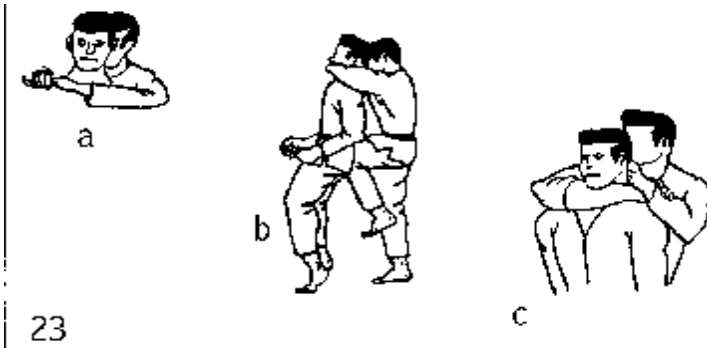
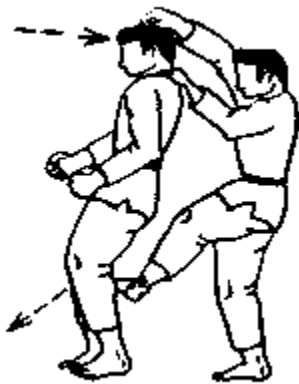


Figure 23c illustrates a stronger variation of this choke. This choke hold can be modified slightly so that it becomes a strangle (a Sleeper Hold). Consider the last illustration in Section 3. Instead of the forearm crossing the front of the throat, the elbow joint is positioned to the front of the throat so that the opponent can breathe. The role of the forearm and bicep is to apply pressure to the sides of the neck. This is done after you jerk the hold on to displace the neck muscles and expose the veins and arteries.

Knee Joint Take Down

Stamp the edge of your foot into the back of the opponents knee joint (Fig24). Strike down at an angle of 45 degrees. This technique can be speeded up by;

- Pulling either the hair, collar or helmet back so that the head makes faster contact with the ground.
- Clapping your cupped hands on their ears or over their eyes to disorientate them first.
- Using a hand clamp on the opponents mouth and chin.



24
Sweeping Ankle

In this attack, block the opponents right leg any where below the kneecap with your right leg. While you are employing the foot block, grab the opponents shoulders or face and throw them back and to the right.

Knee Trip

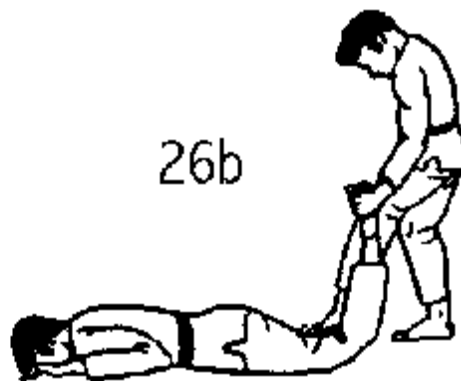
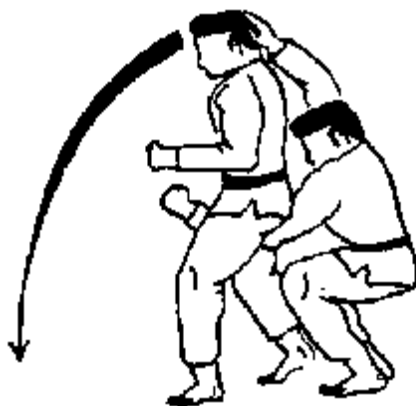
Pull the opponent back off balance and step in to the side of the opponent (Fig 25a). Crouch down, keeping your body close to the opponents and keep pulling back. The opponent will fall over your hip or knee. This can be assisted by pushing on either the eyes or throat (Fig 25b).



25a

Crotch Lift

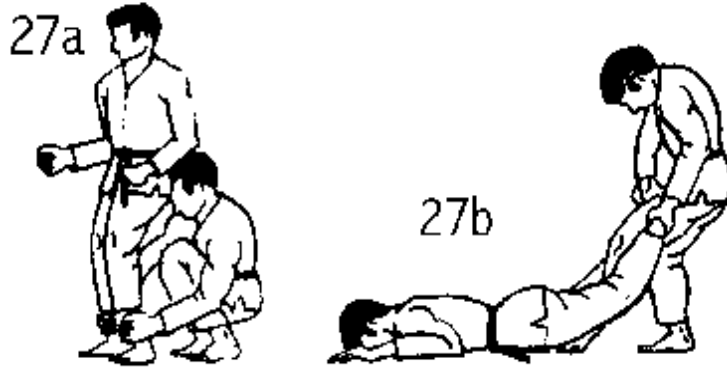
Punch your fist through the opponents crotch and grab at the testicles. Lift the opponent up and push forward with your other hand on the base of their skull (Fig 26a). Finish off with a restraint if required (Fig 26b).



26a

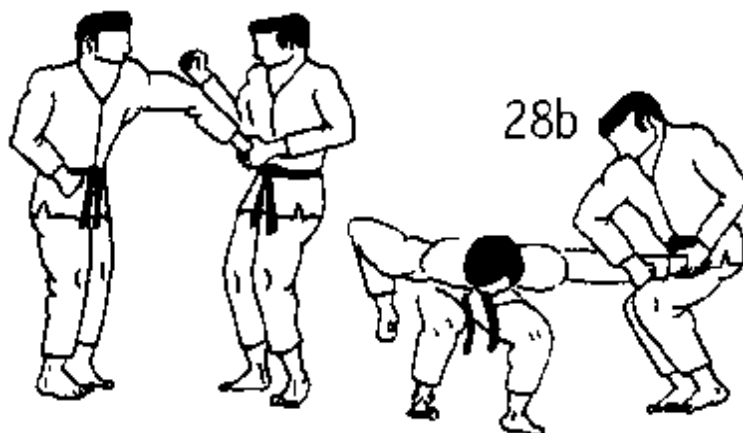
Shoulder Charge and Knee Lift

Strike the opponent in the back with your shoulder to break their balance forward. At the same time reach down and grab the legs below knee cap level. Lift up and back (Fig 27a). Finish off with a restraint if required (Fig 27b).



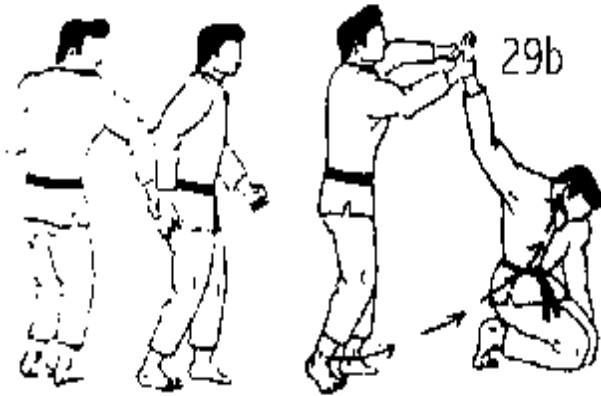
Forearm Smash

Grab the opponents left wrist in your left hand and pull their arm straight back from their body (Fig 28a). In order to apply tension to the elbow joint ensure that your fingers are in contact with the thumb side of their wrist. This will allow you to twist the wrist, applying torque, and thus present the opponents tricep muscle for the next stage of the attack. Land a right forearm smash to the center of the tricep muscle to temporarily disable the arm (Fig 28b). Strike further down, near the back of the elbow joint to break the arm if necessary.



28a Wrist Lock

The offensive wrist lock can be used to either apply a standing restraint or to throw the opponent down. Grab the opponents right palm with your right thumb on the back of their wrist. Reinforce this hold with the other hand so that you can torque the wrist clockwise and throw the opponent forward (Fig 29a & b).

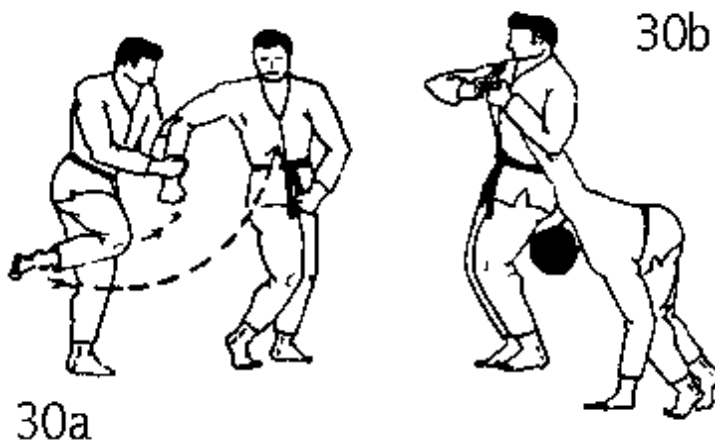


29a

The opponent can be thrown back if you initially grab their right palm with your left hand coming down to the front of their forearm. Again reinforce the grab with the right hand and torque the wrist counterclockwise to throw the opponent back.

Straight Arm Bar

Grab the opponents wrist and cock your leg for a roundhouse kick to the solar plexus (Fig 30a). After the kick twist the opponents wrist so that their palm is facing up. Also bear down with all your weight on their tricep muscle or just above the elbow joint (Fig 30b).



30a

30b